

# POWER TRANSMISSION SOLUTIONS



**NIS**<sup>TM</sup>

<u>SELECTION OF CHAIN DRIVE POWER</u>	<u>01</u>
<u>HORSEPOWER RATING GRAPH (A SERIES ROLLER CHAIN)</u>	<u>02</u>
<u>HORSEPOWER RATING GRAPH (B SERIES ROLLER CHAIN)</u>	<u>03</u>
<u>SELECTION OF LUBRICATIONS</u>	<u>04</u>
<u>ROLLER CHAIN STRUCTURE</u>	<u>05</u>
<u>ROLLER CHAIN PARTS</u>	<u>06</u>
<u>DRIVING CHAINS</u>	<u>09-22</u>
Short pitch precision roller chains (A series) .....	09
Short pitch precision roller chains (B series) .....	12
Heavy duty series roller chains .....	15
Cottered type short pitch precision roller chains (A series) .....	16
Heavy duty series cottered type roller chains .....	18
Side bow chains .....	19
Coupling chains .....	20
Double pitch transmission chains .....	21
Double pitch transmission chain attachments .....	22
<u>CONVEYOR CHAINS</u>	<u>23-33</u>
Roller chains with straight side plates (A series) .....	23
Roller chains with straight side plates (B series) .....	24
Short pitch conveyor chain attachments .....	25
Short pitch conveyor chain with extended pins .....	31
Double pitch conveyor chains .....	32
Hollow pin chains .....	33
<u>STAINLESS STEEL CHAINS</u>	<u>34-37</u>
Stainless steel roller chains .....	34
Double pitch stainless steel conveyor chains .....	35
Stainless steel hollow pin chains .....	36
<u>HOISTING CHAINS</u>	<u>38-40</u>
Leaf chains .....	38
<u>TECHNICAL ARGUMENT</u>	<u>41</u>
<u>PALM OIL MILL CHAINS</u>	<u>42</u>
<u>COUPLINGS &amp; BUSHES</u>	<u>45-54</u>
Jaw couplings .....	45
HRC couplings .....	46
Tyre couplings .....	47
Curved Jaw couplings .....	49
Chain couplings .....	50
FCL pins & bushes .....	51
Taper bushes .....	52

The international organization for standard had issued the ISO10823-1996 standard of Guidance on the selection of roller chain drives. If you try to calculate the input power, you must consider to revise it according to the following formal Actual power = input power x service factor x strand factor

## Service Factor Table

Load type	Source of power		
	Internal combustion engine Hydraulic drive	Electric motor Turbine	Internal combustion Mechanical drive
Smooth	1.0	1.0	1.2
Moderate impact	1.2	1.3	1.4
High impact	1.4	1.5	1.7

## Strand Factor Table

Number of strand	1	2	3	4	5	6
Factor	1.0	1.7	2.5	3.3	4.1	4.9

The chain factories with long history in the world have their own chain transmission power rating graph and power table. Though our country haven't created our own power rating graph, we can refer to the ISO 10823-1996 standard selecting the drive power or selecting chain according to the drive power. The condition is that we should know the number of the small sprocket's teeth and its revolution.

Now we use the transmission part in walking tractor and the transmission power in ratary tillage to proof whether the chain selection is correct.

### 1 Chain drive part

Small sprocket rpm  $n_1 = 1351$

Tooth number of small sprocket  $Z_1 = 14$

Input power = 10.944HP = 8.16kW

### 2 Ratary tillage chain part

Small sprocket rpm  $n_1 = 199$

Tooth number of small sprocket  $Z_1 = 13$

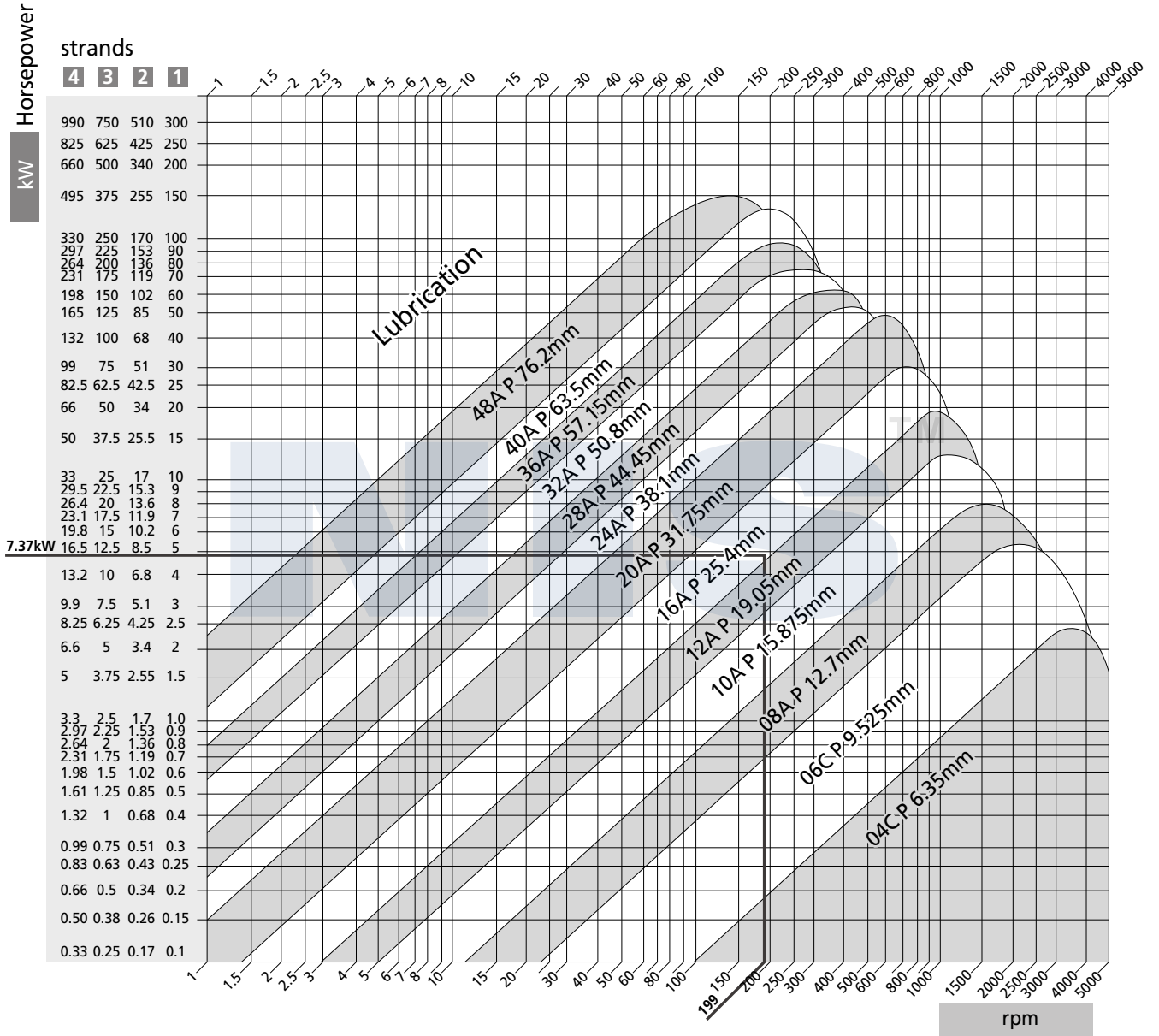
Input power = 9.888HP = 7.37kW

From A series horsepower rating graph, you'll find that selected 12A-2 roller chain is unsuitable, you should choose 16A-1 or 12AH-2 roller chain instead of 12A-2.

For drive z1 = 19 teeth

Chain length 120 links/Ratio i = 3

Service life: 15000 hours



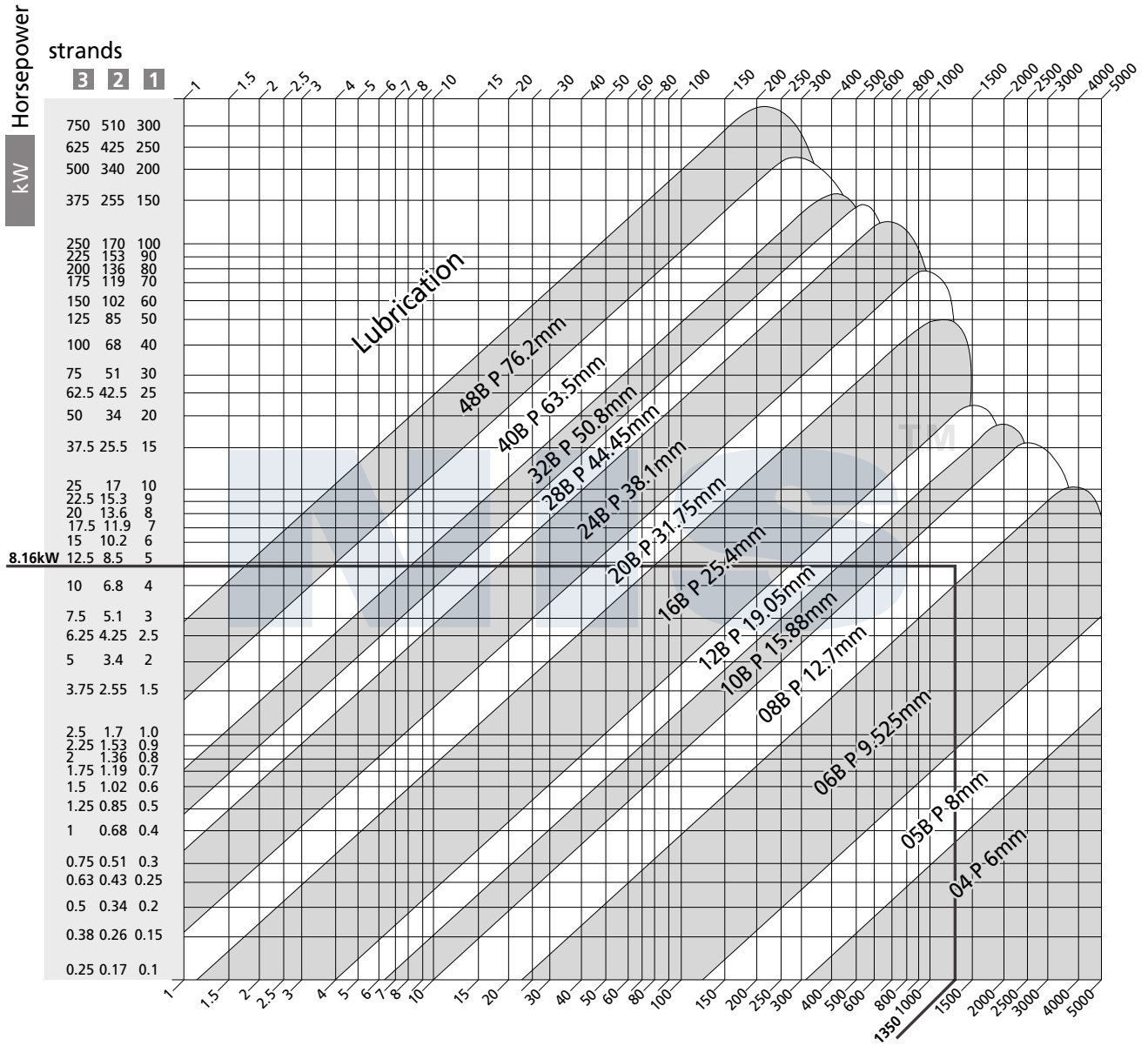
# Horsepower Rating Graph (B Series Roller Chain)



For drive  $z_1 = 19$  teeth

Chain length 120 links/Ratio  $i = 3$

Service life: 15000 hours



Lubrication of chain depends on the working environment, temperature, chain speed and so on.

**1. Effection of working environment**

Open drive such as combine swather etc, Use grease to lubricate.

Closed drive such as walking tractor etc, Use oil to lubricate.

**2. Effection of temperature**

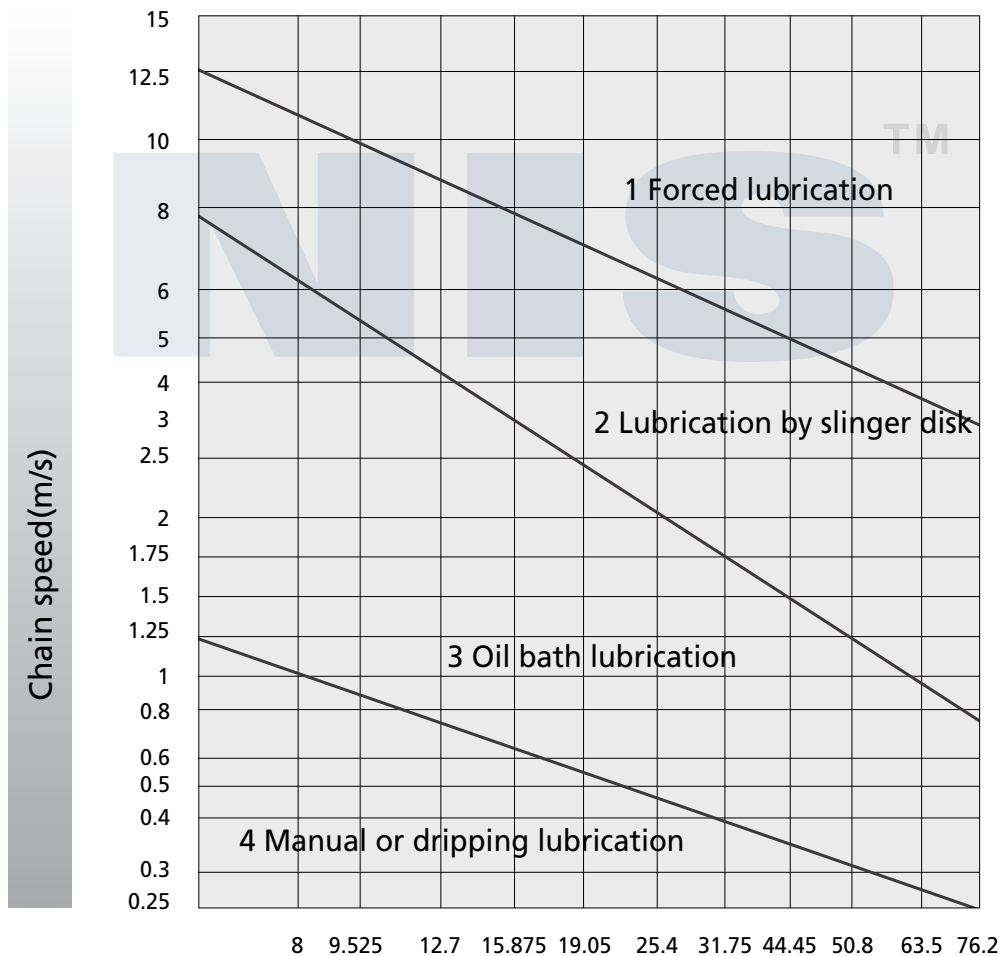
Application in the temperature range of -5 to +60°C is recommended.

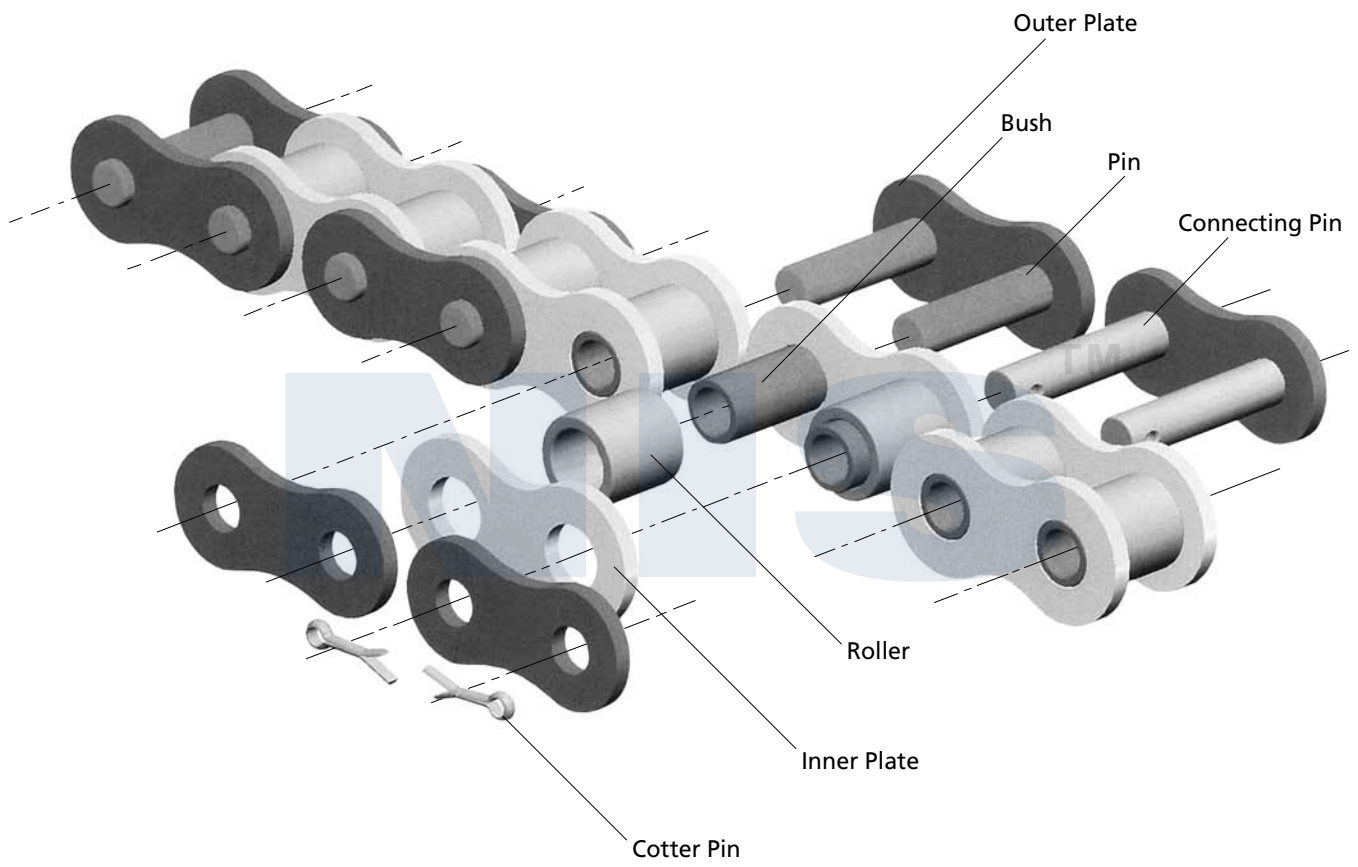
In winter, the thin oil is recommended; But in summer, thick oil is recommended.

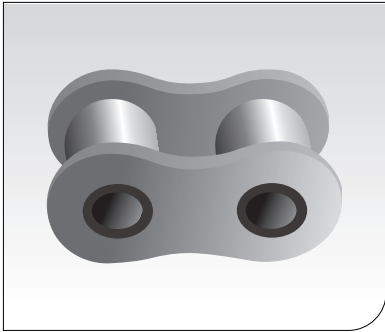
**3. Effection of chain speed**

The lubrication method is related to chain speed see following chart.

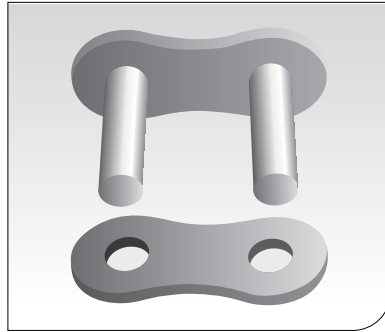
So selecting the lubrication method can refer to the following chart.



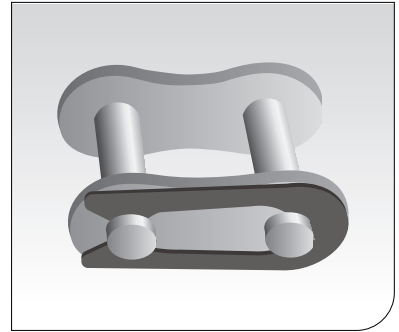




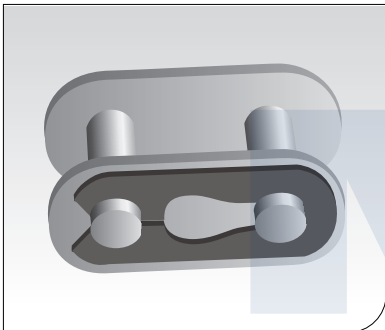
Roller link



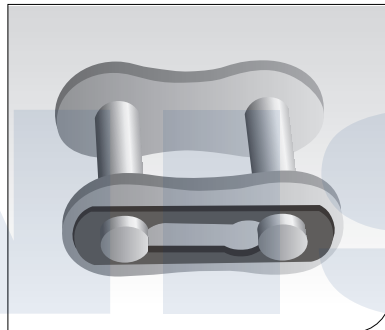
Pin link



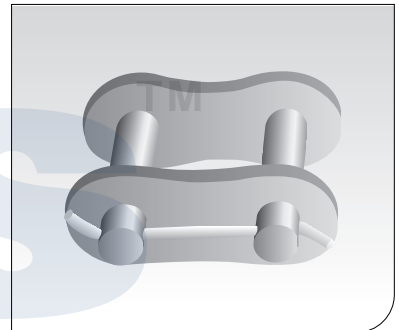
Connecting link with open spring clip



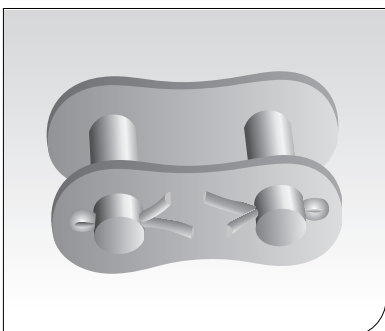
Connecting link with half-close spring clip



Connecting link with close spring clip



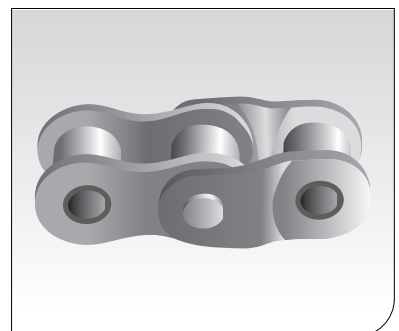
Connecting link with solid long cotter pin



Connecting link with cotter clip



Offset link



Double offset link



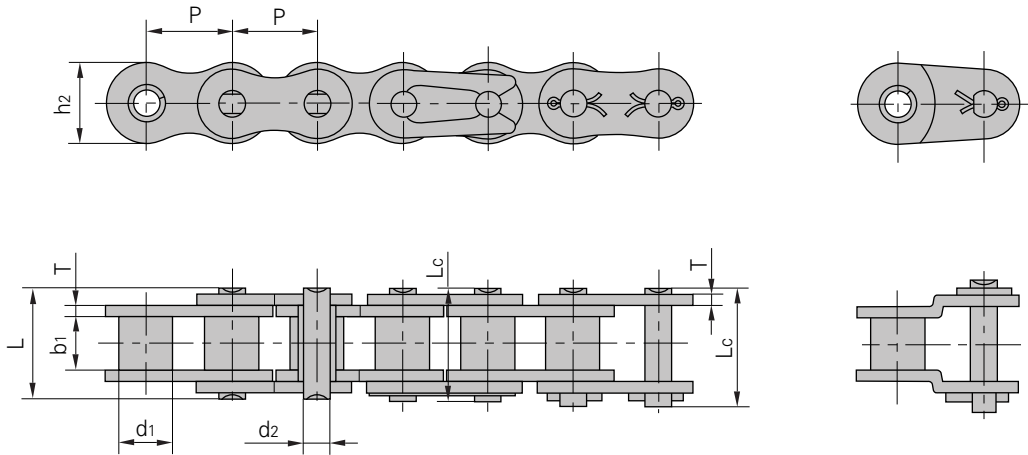


## Chains

	Page
<a href="#">Driving Chains</a>	09
<a href="#">Conveyor Chains</a>	23
<a href="#">Stainless Steel Chains</a>	34
<a href="#">Hoisting Chains</a>	38
<a href="#">Palm Oil Mill Chains</a>	41

# Short Pitch Precision Roller Chains (A Series)

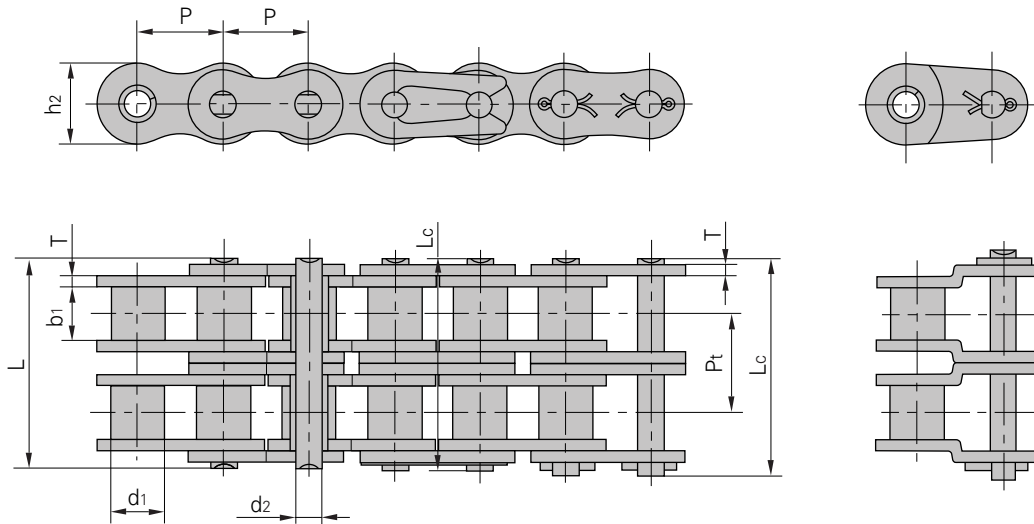
■ Simplex roller chains & bushing chains



DIN/ISO Chain No.	ANSI Chain No.	Pitch	Roller Diameter	Width Between Inner Plates	Pin Diameter	Pin Length		Inner Plate Depth	Plate Thickness	Ultimate Tensile Strength	Average Tensile Strength	Weight Per Meter
		P	d1 max	b1 min	d2 max	L max	Lc max	h2 max	T max	Q min	Q0	q
		mm	mm	mm	mm	mm	mm	mm	mm	kN/LB	kN	kg/m
*03C	*15	4.7625	2.48	2.38	1.62	6.10	6.90	4.30	0.60	1.80/409	2.0	0.08
*04C-1	*25	6.350	3.30	3.18	2.31	7.90	8.40	6.00	0.80	3.50/795	4.6	0.15
*06C-1	*35	9.525	5.08	4.77	3.58	12.40	13.17	9.00	1.30	7.90/1795	10.8	0.33
085-1	41	12.700	7.77	6.25	3.58	13.75	15.00	9.91	1.30	6.67/1516	12.6	0.41
08A-1	40	12.700	7.95	7.85	3.96	16.60	17.80	12.00	1.50	14.10/3205	17.5	0.62
10A-1	50	15.875	10.16	9.40	5.08	20.70	22.20	15.09	2.03	22.20/5045	29.4	1.02
12A-1	60	19.050	11.91	12.57	5.94	25.90	27.70	18.00	2.42	31.80/7227	41.5	1.50
16A-1	80	25.400	15.88	15.75	7.92	32.70	35.00	24.00	3.25	56.70/12886	69.4	2.60
20A-1	100	31.750	19.05	18.90	9.53	40.40	44.70	30.00	4.00	88.50/20114	109.2	3.91
24A-1	120	38.100	22.23	25.22	11.10	50.30	54.30	35.70	4.80	127.00/28864	156.3	5.62
28A-1	140	44.450	25.40	25.22	12.70	54.40	59.00	41.00	5.60	172.40/39182	212.0	7.50
32A-1	160	50.800	28.58	31.55	14.27	64.80	69.60	47.80	6.40	226.80/51545	278.9	10.10
36A-1	180	57.150	35.71	35.48	17.46	72.80	78.60	53.60	7.20	280.20/63682	341.8	13.45
40A-1	200	63.500	39.68	37.85	19.85	80.30	87.20	60.00	8.00	353.80/80409	431.6	16.15
48A-1	240	76.200	47.63	47.35	23.81	95.50	103.00	72.39	9.50	510.30/115977	622.5	23.20

\*Bushing chain: d1 in the table indicate the external diameter of the bushing.

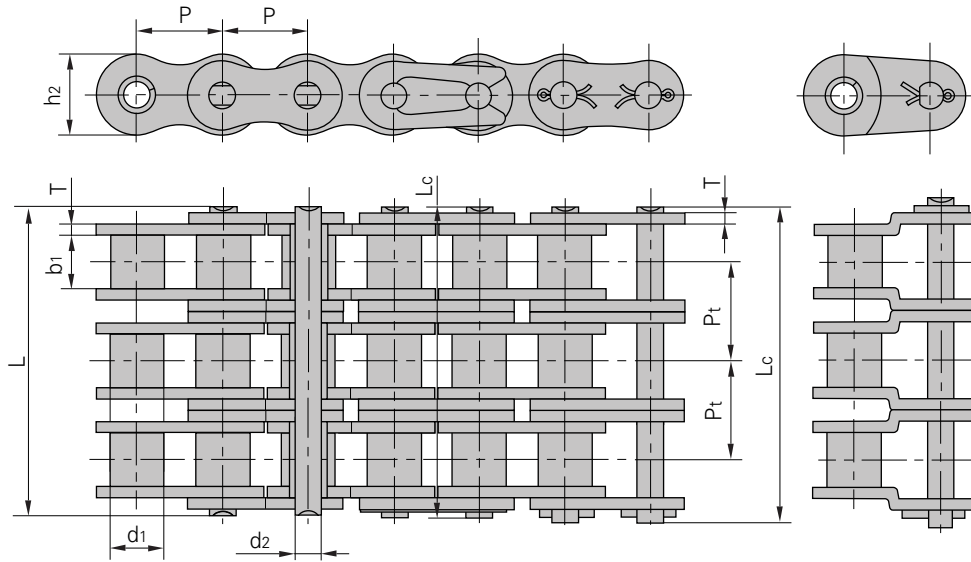
Duplex roller chains & bushing chains



DIN/ISO Chain No.	ANSI Chain No.	Pitch	Roller Diameter	Width Between Inner Plates	Pin Diameter	Pin Length		Inner Plate Depth	Plate Thickness	Transverse Pitch	Ultimate Tensile Strength	Average Tensile Strength	Weight Per Meter
		P	d1 max	b1 min	d2 max	L max	Lc max	h2 max	T max	Pt	Q min	Q0	q
		mm	mm	mm	mm	mm	mm	mm	mm	mm	kN/LB	kN	kg/m
*04C-2	*25-2	6.350	3.30	3.18	2.31	14.5	15.0	6.00	0.80	6.40	7.00/1591	8.6	0.28
*06C-2	*35-2	9.525	5.08	4.77	3.58	22.5	23.3	9.00	1.30	10.13	15.80/3591	19.7	0.63
085-2	41-2	12.700	7.77	6.25	3.58	25.7	26.9	9.91	1.30	11.95	13.34/3032	16.9	0.81
08A-2	40-2	12.700	7.95	7.85	3.96	31.0	32.2	12.00	1.50	14.38	28.20/6409	35.9	1.12
10A-2	50-2	15.875	10.16	9.40	5.08	38.9	40.4	15.09	2.03	18.11	44.40/10091	58.1	2.00
12A-2	60-2	19.050	11.91	12.57	5.94	48.8	50.5	18.00	2.42	22.78	63.60/14455	82.1	2.92
16A-2	80-2	25.400	15.88	15.75	7.92	62.7	64.3	24.00	3.25	29.29	113.40/25773	141.8	5.15
20A-2	100-2	31.750	19.05	18.90	9.53	76.4	80.5	30.00	4.00	35.76	177.00/40227	219.4	7.80
24A-2	120-2	38.100	22.23	25.22	11.10	95.8	99.7	35.70	4.80	45.44	254.00/57727	314.9	11.70
28A-2	140-2	44.450	25.40	25.22	12.70	103.3	107.9	41.00	5.60	48.87	344.80/78364	427.5	15.14
32A-2	160-2	50.800	28.58	31.55	14.27	123.3	128.1	47.80	6.40	58.55	453.60/103091	562.4	20.14
36A-2	180-2	57.150	35.71	35.48	17.46	138.6	144.4	53.60	7.20	65.84	560.50/127386	695.0	29.22
40A-2	200-2	63.500	39.68	37.85	19.85	151.9	158.8	60.00	8.00	71.55	707.60/160818	877.4	32.24
48A-2	240-2	76.200	47.63	47.35	23.81	183.4	190.8	72.39	9.50	87.83	1020.60/213955	1255.3	45.23

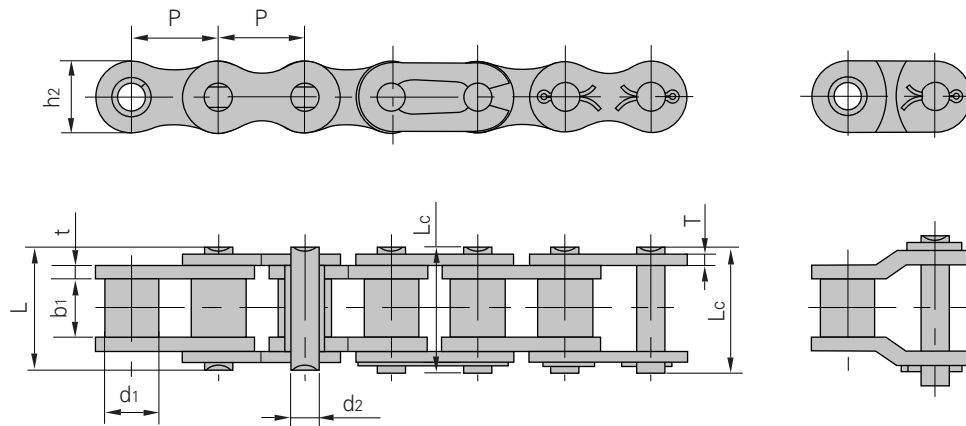
\*Bushing chain: d1 in the table indicate the external diameter of the bushing.

■ Triplex roller chains & bushing chains



DIN/ISO Chain No.	ANSI Chain No.	Pitch	Roller diameter	Width between inner plates	Pin diameter	Pin length		Inner plate depth	Plate thickness	Transverse pitch	Ultimate tensile strength	Average tensile strength	Weight per meter
		P	d1 max	b1 min	d2 max	L max	Lc max	h2 max	T max	Pt	Q min	Q0	q
		mm	mm	mm	mm	mm	mm	mm	mm	mm	kN/LB	kN	kg/m
*04C-3	*25-3	6.350	3.30	3.18	2.31	21.0	21.5	6.00	0.80	6.40	10.5/2386	12.6	0.44
*06C-3	*35-3	9.525	5.08	4.77	3.58	32.7	33.5	9.00	1.30	10.13	23.7/5386	28.6	1.05
08A-3	40-3	12.700	7.95	7.85	3.96	45.4	46.6	12.00	1.50	14.38	42.3/9614	50.0	1.90
10A-3	50-3	15.875	10.16	9.40	5.08	57.0	58.5	15.09	2.03	18.11	66.6/15136	77.8	3.09
12A-3	60-3	19.050	11.91	12.57	5.94	71.5	73.3	18.00	2.42	22.78	95.4/21682	111.1	4.54
16A-3	80-3	25.400	15.88	15.75	7.92	91.7	93.6	24.00	3.25	29.29	170.1/38659	198.4	7.89
20A-3	100-3	31.750	19.05	18.90	9.53	112.2	116.3	30.00	4.00	35.76	265.5/60341	309.6	11.77
24A-3	120-3	38.100	22.23	25.22	11.10	141.4	145.2	35.70	4.80	45.44	381.0/86591	437.2	17.53
28A-3	140-3	44.450	25.40	25.22	12.70	152.2	156.8	41.00	5.60	48.87	517.2/117545	593.3	22.20
32A-3	160-3	50.800	28.58	31.55	14.27	181.8	186.6	47.80	6.40	58.55	680.4/154636	780.6	30.02
36A-3	180-3	57.150	35.71	35.48	17.46	204.4	210.2	53.60	7.20	65.84	840.7/191068	983.6	38.22
40A-3	200-3	63.500	39.68	37.85	19.85	223.5	230.4	60.00	8.00	71.55	1061.4/241227	1217.8	49.03
48A-3	240-3	76.200	47.63	47.35	23.81	271.3	278.6	72.39	9.50	87.83	1530.9/347932	1756.5	71.60

\*Bushing chain: d1 in the table indicate the external diameter of the bushing.

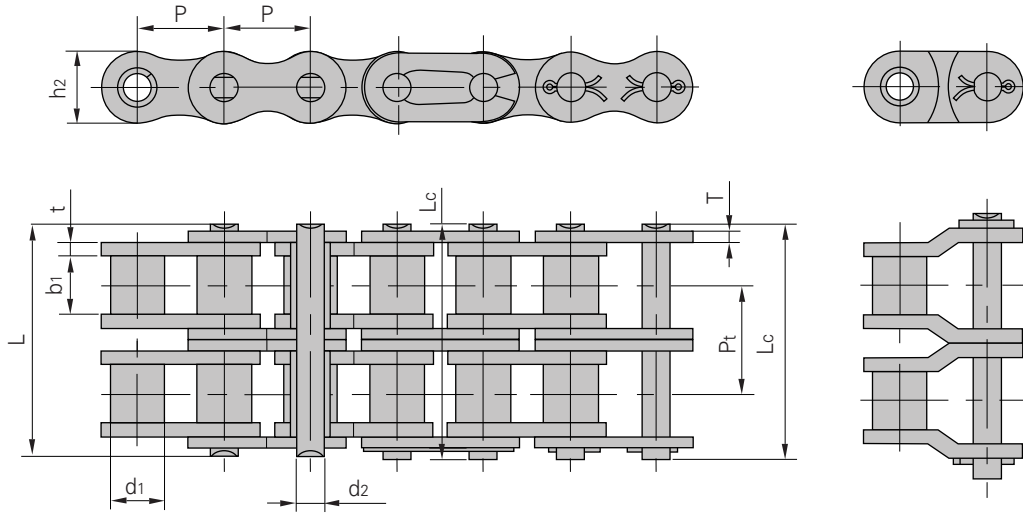


DIN/ISO Chain No.	Pitch	Roller diameter	Width between inner plates	Pin diameter	Pin length		Inner plate depth	Plate thickness	Ultimate tensile strength	Average tensile strength	Weight per meter
	P	d1 max	b1 min	d2 max	L max	Lc max	h2 max	t/T max	Q min	Q0	q
	mm	mm	mm	mm	mm	mm	mm	mm	kN/LB	kN	kg/m
04B-1	6.000	4.00	2.80	1.85	6.80	7.8	5.00	0.60	3.0/682	3.2	0.11
05B-1	8.000	5.00	3.00	2.31	8.20	8.9	7.10	0.80	5.0/1136	5.9	0.20
*06B-1	9.525	6.35	5.72	3.28	13.15	14.1	8.20	1.30	9.0/2045	10.4	0.41
08B-1	12.700	8.51	7.75	4.45	16.70	18.2	11.80	1.60	18.0/4091	19.4	0.69
10B-1	15.875	10.16	9.65	5.08	19.50	20.9	14.70	1.70	22.4/5091	27.5	0.93
12B-1	19.050	12.07	11.68	5.72	22.50	24.2	16.00	1.85	29.0/6591	32.2	1.15
16B-1	25.400	15.88	17.02	8.28	36.10	37.4	21.00	4.15/3.1	60.0/13636	72.8	2.71
20B-1	31.750	19.05	19.56	10.19	41.30	45.0	26.40	4.5/3.5	95.0/21591	106.7	3.70
24B-1	38.100	25.40	25.40	14.63	53.40	57.8	33.20	6.0/4.8	160.0/36364	178.0	7.10
28B-1	44.450	27.94	30.99	15.90	65.10	69.5	36.70	7.5/6.0	200.0/45455	222.0	8.50
32B-1	50.800	29.21	30.99	17.81	66.00	71.0	42.00	7.0/6.0	250.0/56818	277.5	10.25
40B-1	63.500	39.37	38.10	22.89	82.20	89.2	52.96	8.5/8.0	355.0/80682	394.0	16.35
48B-1	76.200	48.26	45.72	29.24	99.10	107.0	63.80	12.0/10.0	560.0/127272	621.6	25.00
56B-1	88.900	53.98	53.34	34.32	114.6	123.0	77.80	13.5/12.0	850.0/193180	940.0	35.78
64B-1	101.60	63.50	60.96	39.40	130.0	138.5	90.17	15.0/13.0	112.0/254544	1240.0	46.00
72B-1	114.30	72.39	68.58	44.48	147.4	156.4	103.60	17.0/15.0	1400.0/318180	1550.0	60.80

\*Straight side plates.

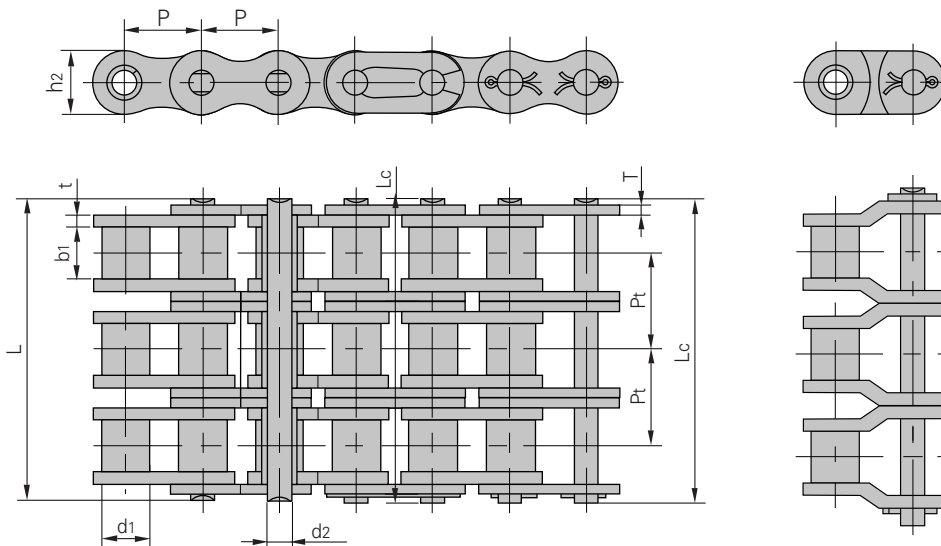
# Short Pitch Precision Roller Chains (B Series)

■ Duplex roller chains



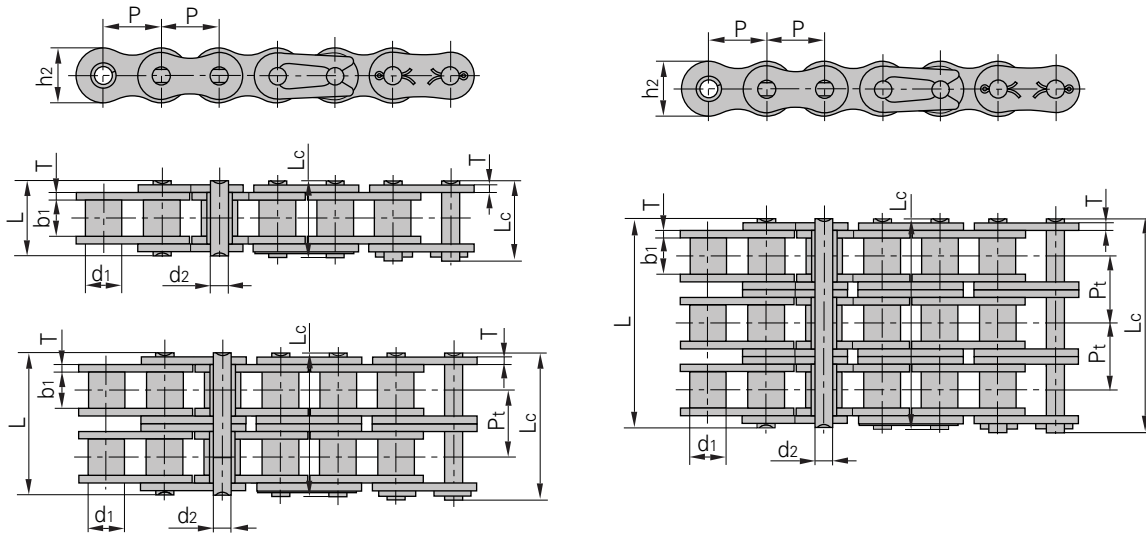
DIN/ISO Chain No.	Pitch	Roller diameter	Width between inner plates	Pin diameter	Pin length		Inner plate depth	Plate thickness	Transverse pitch	Ultimate tensile strength	Average tensile strength	Weight per meter
	p	d1 max	b1 min	d2 max	L max	Lc max	h2 max	t/T max	Pt	Q min	Q0	q
	mm	mm	mm	mm	mm	mm	mm	mm	mm	kN/LB	kN	kg/m
05B-2	8.000	5.00	3.00	2.31	13.9	14.5	7.10	0.80	5.64	7.8/1773	10.2	0.33
*06B-2	9.525	6.35	5.72	3.28	23.4	24.4	8.20	1.30	10.24	16.9/3841	18.7	0.77
08B-2	12.700	8.51	7.75	4.45	31.2	32.2	11.80	1.60	13.92	32.0/7273	38.7	1.34
10B-2	15.875	10.16	9.65	5.08	36.1	37.5	14.70	1.70	16.59	44.5/10114	56.2	1.84
12B-2	19.050	12.07	11.68	5.72	42.0	43.6	16.00	1.85	19.46	57.8/13136	66.1	2.31
16B-2	25.400	15.88	17.02	8.28	68.0	69.3	21.00	4.15/3.1	31.88	106.0/24091	133.0	5.42
20B-2	31.750	19.05	19.56	10.19	77.8	81.5	26.40	4.5/3.5	36.45	170.0/38636	211.2	7.20
24B-2	38.100	25.40	25.40	14.63	101.7	106.2	33.20	6.0/4.8	48.36	280.0/63636	319.2	13.40
28B-2	44.450	27.94	30.99	15.90	124.6	129.1	36.70	7.5/6.0	59.56	360.0/81818	406.8	16.60
32B-2	50.800	29.21	30.99	17.81	124.6	129.6	42.00	7.0/6.0	58.55	450.0/102273	508.5	21.00
40B-2	63.500	39.37	38.10	22.89	154.5	161.5	52.96	8.5/8.0	72.29	630.0/143182	711.9	32.00
48B-2	76.200	48.26	45.72	29.24	190.4	198.2	63.80	12.0/10.0	91.21	1000.0/227272	1130.0	50.00
56B-2	88.900	53.98	53.34	34.32	221.2	229.6	77.80	13.5/12.0	106.6	1600.0/363635	1760.0	71.48
64B-2	101.60	63.50	60.96	39.40	249.9	258.4	90.17	15.0/13.0	119.89	2000.0/454544	2200.0	91.00
72B-2	114.30	72.39	68.58	44.48	283.7	292.7	103.60	17.0/15.0	136.27	2500.0/568180	2750.0	120.40

\*Straight side plates.



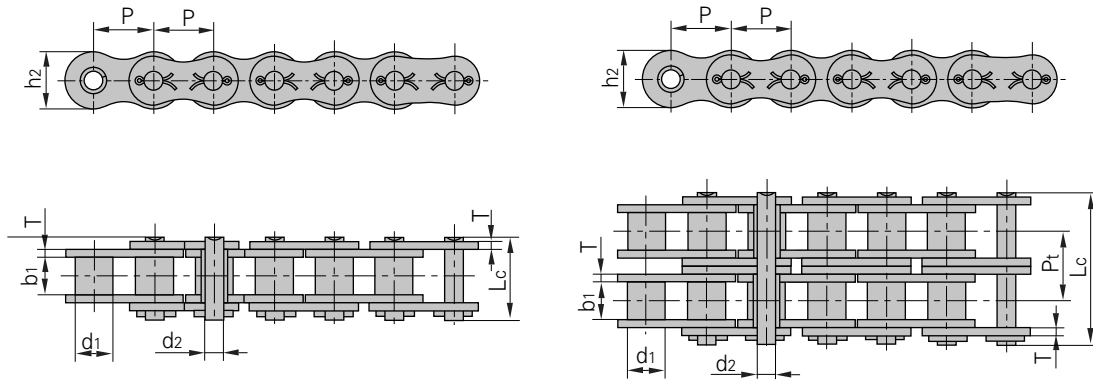
DIN/ISO Chain No.	Pitch	Roller diameter	Width between inner plates	Pin diameter	Pin length		Inner plate depth	Plate thickness	Transverse pitch	Ultimate tensile strength	Average tensile strength	Weight per meter
	P	d1 max	b1 min	d2 max	L max	L1 max	h2 max	t/T max	Pt	Q min	Q0	q
	mm	mm	mm	mm	mm	mm	mm	mm	mm	kN/LB	kN	kg/m
05B-3	8.000	5.00	3.00	2.31	19.5	20.2	7.10	0.80	5.64	11.1/2523	13.8	0.48
*06B-3	9.525	6.35	5.72	3.28	33.5	34.6	8.20	1.30	10.24	24.9/5659	30.1	1.16
08B-3	12.700	8.51	7.75	4.45	45.1	46.1	11.80	1.60	13.92	47.5/10795	57.8	2.03
10B-3	15.875	10.16	9.65	5.08	52.7	54.1	14.70	1.70	16.59	66.7/15159	84.5	2.77
12B-3	19.050	12.07	11.68	5.72	61.5	63.1	16.00	1.85	19.46	86.7/19705	101.8	3.46
16B-3	25.400	15.88	17.02	8.28	99.8	101.2	21.00	4.15/3.1	31.88	160.0/36364	203.7	8.13
20B-3	31.750	19.05	19.56	10.19	114.2	117.9	26.40	4.5/3.5	36.45	250.0/56818	290.0	10.82
24B-3	38.100	25.40	25.40	14.63	150.1	154.6	33.20	6.0/4.8	48.36	425.0/96591	493.0	20.10
28B-3	44.450	27.94	30.99	15.90	184.2	188.7	36.70	7.5/6.0	59.56	530.0/120454	609.5	24.92
32B-3	50.800	29.21	30.99	17.81	183.2	188.2	42.00	7.0/6.0	58.55	670.0/152273	770.5	31.56
40B-3	63.500	39.37	38.10	22.89	226.8	233.8	52.96	8.5/8.0	72.29	950.0/215909	1092.5	48.10
48B-3	76.200	48.26	45.72	29.24	281.6	289.4	63.80	12.0/10.0	91.21	1500.0/340909	1710.0	75.00
56B-3	88.900	53.98	53.34	34.32	327.8	336.2	77.80	13.5/12.0	106.6	2240.0/545450	2240.0	107.18
64B-3	101.60	63.50	60.96	39.40	369.8	378.3	90.17	15.0/13.0	119.89	3000.0/681820	3300.0	136.00
72B-3	114.30	72.39	68.58	44.48	420.0	429.0	103.60	17.0/15.0	136.27	3750.0/852270	4125.0	180.00

\*Straight side plates.



DIN/ISO Chain No.	ANSI Chain No.	Pitch	Roller Diameter	Width Between Inner Plates	Pin Diameter	Pin Length		Inner Plate Depth	Plate Thickness	Transverse Pitch	Ultimate Tensile Strength	Average Tensile Strength	Weight Per Meter
		P	d1 max	b1 min	d2 max	L max	Lc max	h2 max	T max	Pt	Q min	Q0	q
		mm	mm	mm	mm	mm	mm	mm	mm	mm	kN/LB	kN	kg/m
	*35H	9.525	5.08	4.77	3.58	13.3	14.3	9.0	1.5		7.9/1795	10.8	0.41
08AH-1	40H	12.700	7.95	7.85	3.96	18.8	19.9	12.00	2.03		14.1/3205	19.1	0.82
10AH-1	50H	15.875	10.16	9.40	5.08	22.1	23.4	15.09	2.42		22.2/5045	30.2	1.25
12AH-1	60H	19.050	11.91	12.57	5.94	29.2	31.0	18.00	3.25		31.8/7227	42.7	1.87
16AH-1	80H	25.400	15.88	15.75	7.92	36.2	37.7	24.00	4.00		56.7/12886	71.4	3.10
20AH-1	100H	31.750	19.05	18.90	9.53	43.6	46.9	30.00	4.80		88.5/20114	112.4	4.52
24AH-1	120H	38.100	22.23	25.22	11.10	53.5	57.5	35.70	5.60		127.0/28864	160.9	6.60
28AH-1	140H	44.450	25.40	25.22	12.70	57.6	62.2	41.00	6.40		172.4/39182	217.3	8.30
32AH-1	160H	50.800	28.58	31.55	14.27	68.2	73.0	47.80	7.20		226.8/51545	285.8	10.30
36AH-1	180H	57.150	35.71	35.48	17.46	75.9	81.6	53.60	8.0		281.0/63863	341.8	14.83
40AH-1	200H	63.500	39.68	37.85	19.85	86.6	93.5	60.00	9.50		353.8/80409	444.5	19.16
48AH-1	240H	76.200	47.63	47.35	23.81	109.6	115.9	72.30	12.70		510.30/115977	622.5	30.4
12AH-2	60H-2	19.050	11.91	12.57	5.94	55.3	57.1	18.00	3.25	26.11	63.6/14455	84.5	3.71
16AH-2	80H-2	25.400	15.88	15.75	7.92	68.8	70.3	24.00	4.00	32.59	113.4/25773	145.3	6.15
20AH-2	100H-2	31.750	19.05	18.90	9.53	82.7	86.0	30.00	4.80	39.09	177.0/40227	225.9	9.03
24AH-2	120H-2	38.100	22.23	25.22	11.10	102.4	106.4	35.70	5.60	48.87	254.0/57727	322.7	13.13
28AH-2	140H-2	44.450	25.40	25.22	12.70	109.8	114.4	41.00	6.40	52.20	344.8/78364	437.7	16.60
32AH-2	160H-2	50.800	28.58	31.55	14.27	130.1	134.9	47.80	7.20	61.90	453.6/103091	571.6	20.20
40AH-2	200H-2	63.500	39.68	37.85	19.85	164.9	171.8	60.00	9.50	78.31	707.6/160818	894.9	38.11
12AH-3	60H-3	19.050	11.91	12.57	5.94	81.4	83.2	18.00	3.25	26.11	95.4/21682	113.9	5.54
16AH-3	80H-3	25.400	15.88	15.75	7.92	101.4	102.9	24.00	4.00	32.59	170.1/38659	203.5	9.42
20AH-3	100H-3	31.750	19.05	18.90	9.53	121.8	125.1	30.00	4.80	39.09	265.5/60341	314.8	12.96
24AH-3	120H-3	38.100	22.23	25.22	11.10	151.2	155.2	35.70	5.60	48.87	381.0/86591	444.7	19.64
28AH-3	140H-3	44.450	25.40	25.22	12.70	162.0	166.6	41.00	6.40	52.20	517.2/117545	598.4	24.90
32AH-3	160H-3	50.800	28.58	31.55	14.27	192.0	196.8	47.80	7.20	61.90	680.4/154636	787.3	30.10
40AH-3	200H-3	63.500	39.68	37.85	19.85	243.2	250.1	60.00	9.50	78.31	1061.4/241227	1228.2	57.06

\*Bushing chain: d1 in the table indicate the external diameter of the bushing.

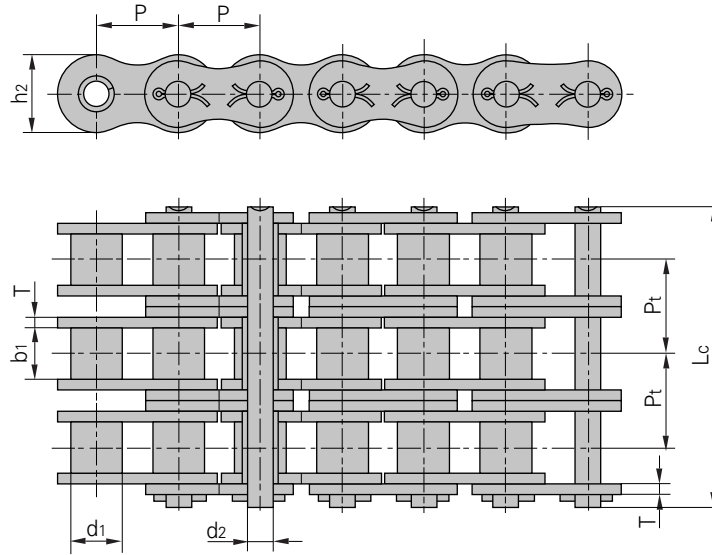


DIN/ISO Chain No.	ANSI Chain No.	Pitch	Roller Diameter	Width Between Inner plates	Pin Diameter	Pin Length	Inner Plate Depth	Plate Thickness	Transverse Pitch	Ultimate Tensile Strength	Average Tensile Strength	Weight Per Meter
		P	d1 max	b1 min	d2 max	Lc max	h2 max	T max	Pt	Q min	Q0	q
		mm	mm	mm	mm	mm	mm	mm	mm	mm	kN/LB	kN
10A-1	50	15.875	10.16	9.40	5.08	23.3	15.09	2.03		22.2/5045	29.4	1.02
12A-1	60	19.050	11.91	12.57	5.94	28.3	18.00	2.42		31.8/7227	41.5	1.50
16A-1	80	25.400	15.88	15.75	7.92	36.5	24.00	3.25		56.7/12886	69.4	2.60
20A-1	100	31.750	19.05	18.90	9.53	44.7	30.00	4.00		88.5/20114	109.2	3.91
24A-1	120	38.100	22.23	25.22	11.10	54.3	35.70	4.80		127.0/28864	156.3	5.62
28A-1	140	44.450	25.40	25.22	12.70	59.0	41.00	5.60		172.4/39182	212.0	7.50
32A-1	160	50.800	28.58	31.55	14.27	69.6	47.80	6.40		226.8/51545	278.9	10.10
36A-1	180	57.150	35.71	35.48	17.46	78.6	53.60	7.20		280.2/63682	341.8	13.45
40A-1	200	63.500	39.68	37.85	19.85	87.2	60.00	8.00		353.8/80409	431.6	16.15
48A-1	240	76.200	47.63	47.35	23.81	103.0	72.39	9.50		510.3/115977	622.5	23.20
10A-2	50-2	15.875	10.16	9.40	5.08	41.2	15.09	2.03	18.11	44.4/10091	58.1	2.00
12A-2	60-2	19.050	11.91	12.57	5.94	51.1	18.00	2.42	22.78	63.6/14455	82.1	2.92
16A-2	80-2	25.400	15.88	15.75	7.92	65.8	24.00	3.25	29.29	113.4/25773	141.8	5.15
20A-2	100-2	31.750	19.05	18.90	9.53	80.5	30.00	4.00	35.76	177.0/40227	219.4	7.80
24A-2	120-2	38.100	22.23	25.22	11.10	99.7	35.70	4.80	45.44	254.0/57727	314.9	11.70
28A-2	140-2	44.450	25.40	25.22	12.70	107.9	41.00	5.60	48.87	344.8/78364	427.5	15.14
32A-2	160-2	50.800	28.58	31.55	14.27	128.1	47.80	6.40	58.55	453.6/103091	562.4	20.14
36A-2	180-2	57.150	35.71	35.48	17.46	144.4	53.60	7.20	65.84	560.5/127386	695.0	29.22
40A-2	200-2	63.500	39.68	37.85	19.85	158.8	60.00	8.00	71.55	707.6/160818	877.4	32.24
48A-2	240-2	76.200	47.63	47.35	23.81	190.8	72.39	9.50	87.83	1020.6/231955	1255.3	45.23

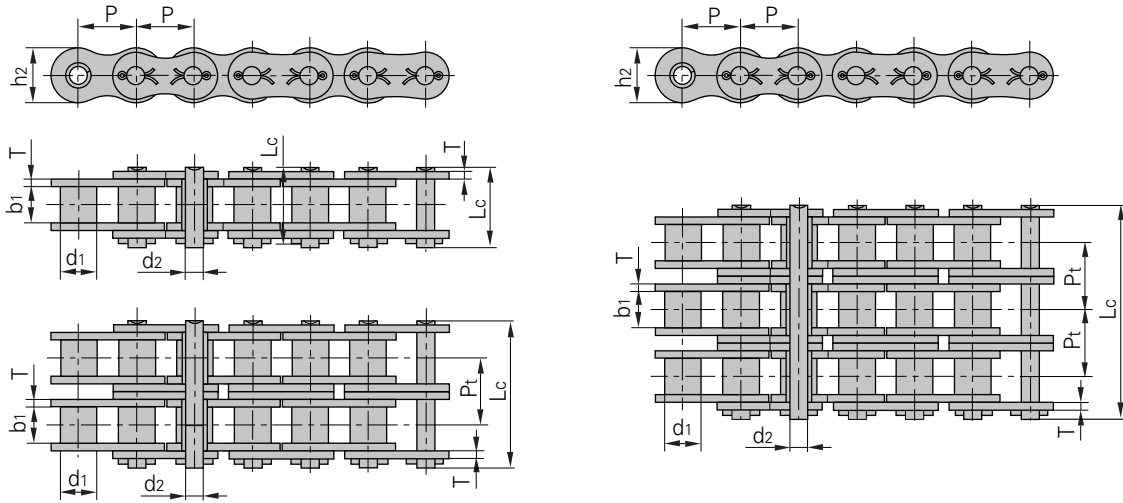
\*Straight side plates.

# Cottered Type Short Pitch Precision Roller Chains (A Series)

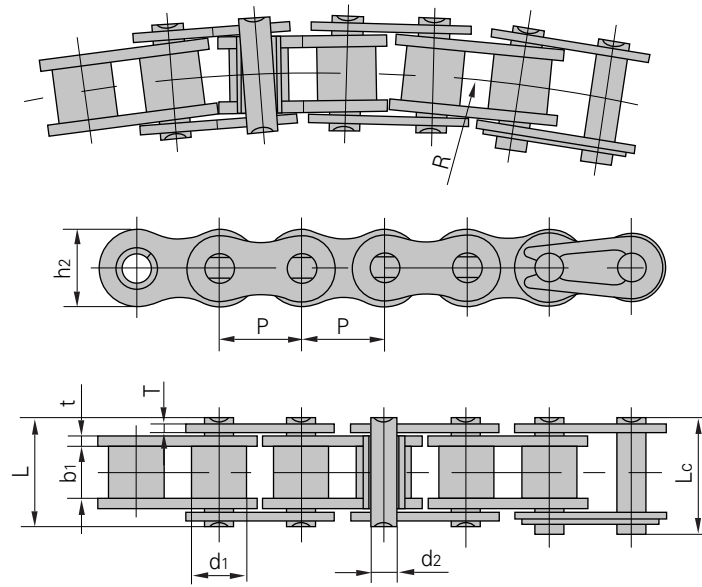
■ Triplex roller chains



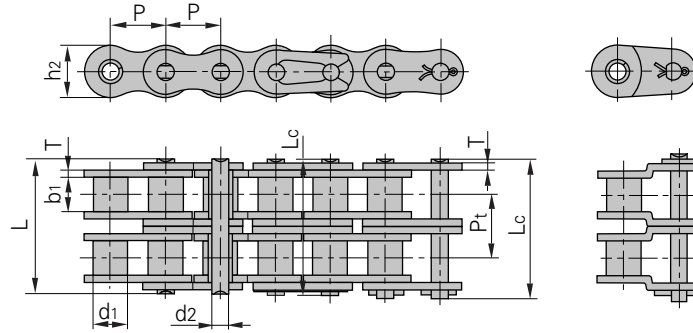
DIN/ISO Chain No.	ANSI Chain No.	Pitch	Roller Diameter	Width Between Inner Plates	Pin Diameter	Pin Length	Inner Plate Depth	Plate Thickness	Transverse Pitch	Ultimate Tensile Strength	Average Tensile Strength	Weight Per Meter
		$P$	$d_1$ max	$b_1$ min	$d_2$ max	$L_c$ max	$h_2$ max	$T$ max	$P_t$	$Q$ min	$Q_0$	$q$
		mm	mm	mm	mm	mm	mm	mm	mm	kN/LB	kN	kg/m
10A-3	50-3	15.875	10.16	9.40	5.08	59.3	15.09	2.03	18.11	66.6/15136	77.8	3.09
12A-3	60-3	19.050	11.91	12.57	5.94	73.9	18.00	2.42	22.78	95.4/21682	111.1	4.54
16A-3	80-3	25.400	15.88	15.75	7.92	95.1	24.00	3.25	29.29	170.1/38659	198.4	7.89
20A-3	100-3	31.750	19.05	18.90	9.53	116.3	30.00	4.00	35.76	265.5/60341	309.6	11.77
24A-3	120-3	38.100	22.23	25.22	11.10	145.2	35.70	4.80	45.44	381.0/86591	437.2	17.53
28A-3	140-3	44.450	25.40	25.22	12.70	156.8	41.00	5.60	48.87	517.2/117545	593.3	22.20
32A-3	160-3	50.800	28.58	31.55	14.27	186.6	47.80	6.40	58.55	680.4/154636	780.6	30.02
36A-3	180-3	57.150	35.71	35.48	17.46	210.2	53.60	7.20	65.84	840.7/191068	983.6	38.22
40A-3	200-3	63.500	39.68	37.85	19.85	230.4	60.00	8.00	71.55	1061.4/241227	1217.8	49.03
48A-3	240-3	76.200	47.63	47.35	23.81	278.6	72.39	9.50	87.83	1530.9/347932	1756.5	71.60



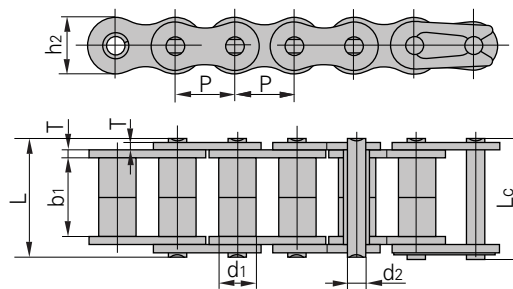
DIN/ISO Chain No.	ANSI Chain No.	Pitch	Roller Diameter	Width Between Inner Plates	Pin Diameter	Pin Length	Inner Plate Depth	Plate Thickness	Transverse Pitch	Ultimate Tensile Strength	Average Tensile Strength	Weight Per Meter
		P	d1 max	b1 min	d2 max	Lc max	h2 max	T max	Pt	Q min	Q0	q
		mm	mm	mm	mm	mm	mm	mm	mm	kN/LB	kN	kg/m
10AH-1	50H	15.875	10.16	9.40	5.08	24.4	15.09	2.42		22.2/5045	30.2	1.25
12AH-1	60H	19.050	11.91	12.57	5.94	31.6	18.00	3.25		31.8/7227	42.7	1.87
16AH-1	80H	25.400	15.88	15.75	7.92	39.4	24.00	4.00		56.7/12886	71.4	3.10
20AH-1	100H	31.750	19.05	18.90	9.53	46.9	30.00	4.80		88.5/20114	112.4	4.52
24AH-1	120H	38.100	22.23	25.22	11.10	57.5	35.70	5.60		127.0/28864	160.9	6.60
28AH-1	140H	44.450	25.40	25.22	12.70	62.2	41.00	6.40		172.4/39182	217.3	8.30
32AH-1	160H	50.800	28.58	31.55	14.27	73.0	47.80	7.20		226.8/51545	285.8	10.30
40AH-1	200H	63.500	39.68	37.85	19.85	93.5	60.00	9.50		353.8/80409	444.5	19.16
12AH-2	60H-2	19.050	11.91	12.57	5.94	57.7	18.00	3.25	26.11	63.6/14454	84.5	3.71
16AH-2	80H-2	25.400	15.88	15.75	7.92	72.0	24.00	4.00	32.59	113.4/25773	145.3	6.15
20AH-2	100H-2	31.750	19.05	18.90	9.53	86.0	30.00	4.80	39.09	177.0/40227	225.9	9.03
24AH-2	120H-2	38.100	22.23	25.22	11.10	106.4	35.70	5.60	48.87	254.0/57727	322.7	13.13
28AH-2	140H-2	44.450	25.40	25.22	12.70	114.4	41.00	6.40	52.20	344.8/78364	437.7	16.60
32AH-2	160H-2	50.800	28.58	31.55	14.27	134.9	47.80	7.20	61.90	453.6/103091	571.6	20.20
40AH-2	200H-2	63.500	39.68	37.85	19.85	171.8	60.00	9.50	78.31	707.6/160818	894.9	38.11
12AH-2	60H-3	19.050	11.91	12.57	5.94	83.8	18.00	3.25	26.11	95.4/21682	113.9	5.54
16AH-2	80H-3	25.400	15.88	15.75	7.92	104.6	24.00	4.00	32.59	170.1/38659	203.5	9.42
20AH-3	100H-3	31.750	19.05	18.90	9.53	125.1	30.00	4.80	39.09	265.5/60341	314.8	12.96
24AH-3	120H-3	38.100	22.23	25.22	11.10	155.2	35.70	5.60	48.87	381.0/86591	444.7	19.64
28AH-3	140H-3	44.450	25.40	25.22	12.70	166.6	41.00	6.40	52.20	517.2/117545	598.4	24.90
32AH-3	160H-3	50.800	28.58	31.55	14.27	196.8	47.80	7.20	61.90	680.4/154636	787.3	30.10
40AH-3	200H-3	63.500	39.68	37.85	19.85	250.1	60.00	9.50	78.31	1061.4/241227	1228.2	57.06



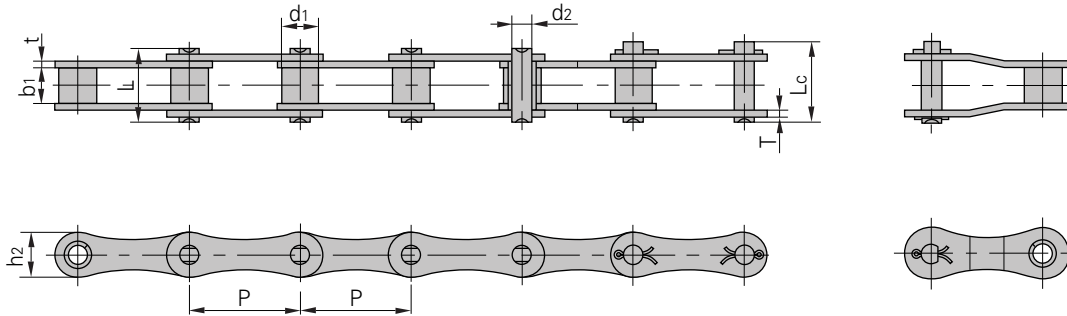
Chain No.	Pitch	Roller Diameter	Width Between Inner Plates	Pin Diameter	Pin Length		Inner Plate Depth	Plate Thickness	Side Bow Radius	Ultimate Tensile Strength	Average Tensile Strength	Weight Per Meter
	P	d1 max	b1 min	d2 max	L max	Lc max	h2 max	t/T max	R min	Q min	Q0	q
	mm	mm	mm	mm	mm	mm	mm	mm	mm	kN/LB	kN	kg/m
40SB	12.70	7.95	7.85	3.96	16.9	18.1	11.7	1.5	350	13.8/3136	15.2	0.80
43SB	12.70	7.95	7.85	3.45	18.3	19.5	11.7	1.5	305	12.0/2727	13.2	0.64
50SB	15.875	10.16	9.40	4.37	20.7	22.7	14.9	2.03	400	20.6/4681	22.7	1.09
60SB	19.05	11.91	12.57	5.34	26.6	28.4	18.0	2.42	500	15.7/3568	17.3	1.54
63SB	19.05	11.91	12.68	5.08	28.8	30.6	17.2	2.42/2.03	350	12.5/2840	20.0	1.40
80SB	25.40	15.88	15.75	7.19	34.0	37.3	24.0	3.25	711	40.9/9201	42.0	2.60
08BSB	12.70	8.51	7.75	3.97	17.4	18.7	11.8	1.6	400	14.0/3182	15.4	0.70
08BSBF1	12.70	8.51	7.75	3.97	16.3	17.6	11.8	1.6/1.2	400	12.8/2909	14.1	0.65
10BSB	15.875	10.16	9.65	4.50	20.1	21.5	14.7	1.7	400	15.6/3545	17.2	0.93
12BSB	19.05	12.07	11.68	5.12	23.1	24.8	16.0	1.85	500	20.5/4658	22.6	1.16
C2050SB	31.75	10.16	9.40	5.08	21.3	22.6	15.0	2.03	800	21.8/4954	24.1	0.84



ANSI Chain No.	Pitch	Roller Diameter	Width Between Inner Plates	Pin Diameter	Pin Length		Inner Plate Depth	Plate Thickness	Transverse Pitch	Ultimate Tensile Strength	Average Tensile Strength	Weight Per Piece
	P	d1 max	b1 min	d2 max	L max	Lc max	h2 max	T max	Pt	Q min	Q0	q
	mm	mm	mm	mm	mm	mm	mm	mm	mm	kN/LB	kN	kg/m
4012	12.700	7.95	7.85	3.96	31.0	32.2	12.00	1.50	14.38	28.2/6409	35.9	0.16
4014	12.700	7.95	7.85	3.96	31.0	32.2	12.00	1.50	14.38	28.2/6409	35.9	0.19
4016	12.700	7.95	7.85	3.96	31.0	32.2	12.00	1.50	14.38	28.2/6409	35.9	0.21
5014	15.875	10.16	9.40	5.08	38.9	40.4	15.09	2.03	18.11	44.4/10091	58.1	0.49
5016	15.875	10.16	9.40	5.08	38.9	40.4	15.09	2.03	18.11	44.4/10091	58.1	0.56
5018	15.875	10.16	9.40	5.08	38.9	40.4	15.09	2.03	18.11	44.4/10091	58.1	0.63
6018	19.050	11.91	12.57	5.94	48.8	50.5	18.00	2.42	22.78	63.6/14455	82.1	1.00
6020	19.050	11.91	12.57	5.94	48.8	50.5	18.00	2.42	22.78	63.6/14455	82.1	1.11
6022	19.050	11.91	12.57	5.94	48.8	50.5	18.00	2.42	22.78	63.6/14455	82.1	1.22
8018	25.400	15.88	15.75	7.92	62.7	64.3	24.00	3.25	29.29	113.4/25773	141.8	2.35
8020	25.400	15.88	15.75	7.92	62.7	64.3	24.00	3.25	29.29	113.4/25773	141.8	2.62
8022	25.400	15.88	15.75	7.92	62.7	64.3	24.00	3.25	29.29	113.4/25773	141.8	2.88
10022	31.750	19.05	18.90	9.53	76.4	80.5	30.00	4.00	35.76	177.0/40227	219.4	4.95
12018	38.100	22.23	25.22	11.10	95.8	99.7	35.70	4.80	45.44	254.0/57727	314.9	8.14

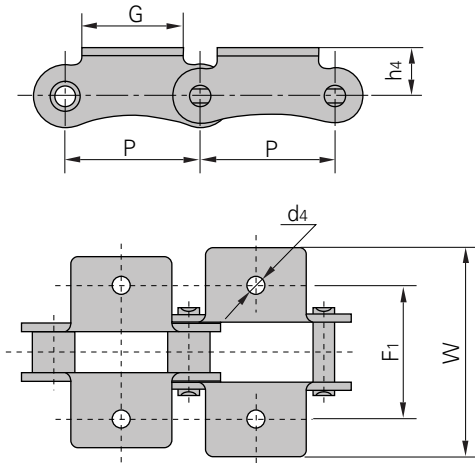


Chain No.	Pitch	Roller Diameter	Width Between Inner Plates	Pin Diameter	Pin Length		Inner Plate Depth	Plate Thickness	Breaking Load	Average Tensile Strength	Weight Per Meter
	P	d1 max	b1 min	d2 max	L max	Lc max	h2 max	T max	Q	Q0	q
	mm	mm	mm	mm	mm	mm	mm	mm	kN/LB	kN	kg/m
10AF13	15.875	10.16	16.31	5.08	27.6	29.1	15.09	2.03	22.20/5045	29.4	1.35
12AF2	19.050	11.91	19.10	5.94	32.6	34.4	18.00	2.42	31.80/7227	41.5	1.90
12AF6	19.050	11.91	18.80	5.94	31.9	33.5	18.00	2.42	31.80/7227	41.5	1.87
12AF26	19.050	11.91	19.36	5.94	31.9	33.5	18.00	2.42	31.80/7227	41.5	1.94
16AF25	25.400	15.88	25.58	7.92	42.4	43.9	24.00	3.25	56.70/12886	69.4	3.26

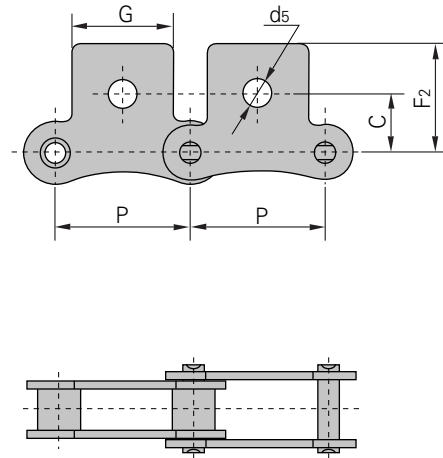


DIN/ISO Chain No.	ANSI Chain No.	Pitch	Roller Diameter	Width Between Inner Plates	Pin Diameter	Pin Length		Inner Plate Depth	Plate Thickness	Ultimate Tensile Strength	Average Tensile Strength	Weight Per Meter
		p	d1 max	b1 min	d2 max	L max	Lc max	h2 max	t/T max	Q min	Q0	q
		mm	mm	mm	mm	mm	mm	mm	mm	kN/LB	kN	kg/m
208A	2040	25.40	7.95	7.85	3.96	16.6	17.8	12.0	1.50	14.1/3205	16.7	0.42
208B		25.40	8.51	7.75	4.45	16.7	18.2	11.8	1.60	18.0/4091	19.4	0.45
210A	2050	31.75	10.16	9.40	5.08	20.7	22.2	15.0	2.03	22.2/5045	28.1	0.73
210B		31.75	10.16	9.65	5.08	19.5	20.9	14.7	1.70	22.4/5091	27.5	0.65
212A	2060	38.10	11.91	12.57	5.94	25.9	27.7	18.0	2.42	31.8/7227	36.8	1.02
212B		38.10	12.07	11.68	5.72	22.5	25.2	16.0	1.85	29.0/6591	32.2	0.76
216A	2080	50.80	15.88	15.75	7.92	32.7	36.5	24.0	3.25	56.7/12886	65.7	1.70
216AH	2080H	50.80	15.88	15.75	7.92	36.2	39.4	24.0	4.00	56.7/12886	70.0	2.17
216B		50.80	15.88	17.02	8.28	36.1	39.1	21.0	4.15/3.1	60.0/13636	72.8	1.75
220A	2100	63.50	19.05	18.90	9.53	40.4	44.7	30.0	4.00	88.5/20114	102.6	2.55
220B		63.50	19.05	19.56	10.19	41.3	45.0	26.4	4.5/3.5	95.0/14773	106.7	2.62
224A	2120	76.20	22.23	25.22	11.10	50.3	54.3	35.7	4.80	127.0/28864	147.3	4.06
224B		76.20	25.40	25.40	14.63	53.4	57.8	33.2	6.0/4.8	160.0/36364	178.0	4.70
228B		88.90	27.94	30.99	15.90	65.1	69.5	36.7	7.5/6.0	200.0/45455	222.0	6.23
232B		101.60	29.21	30.99	17.81	66.0	71.0	42.0	7.0/6.0	250.0/56818	277.5	6.72

K-1

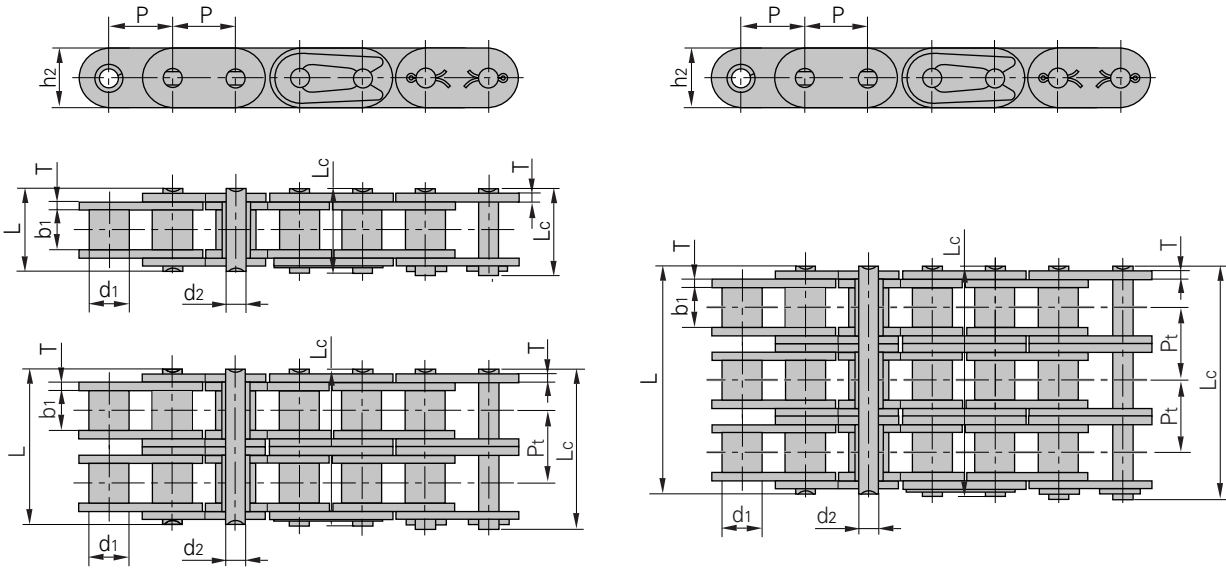


SK-1



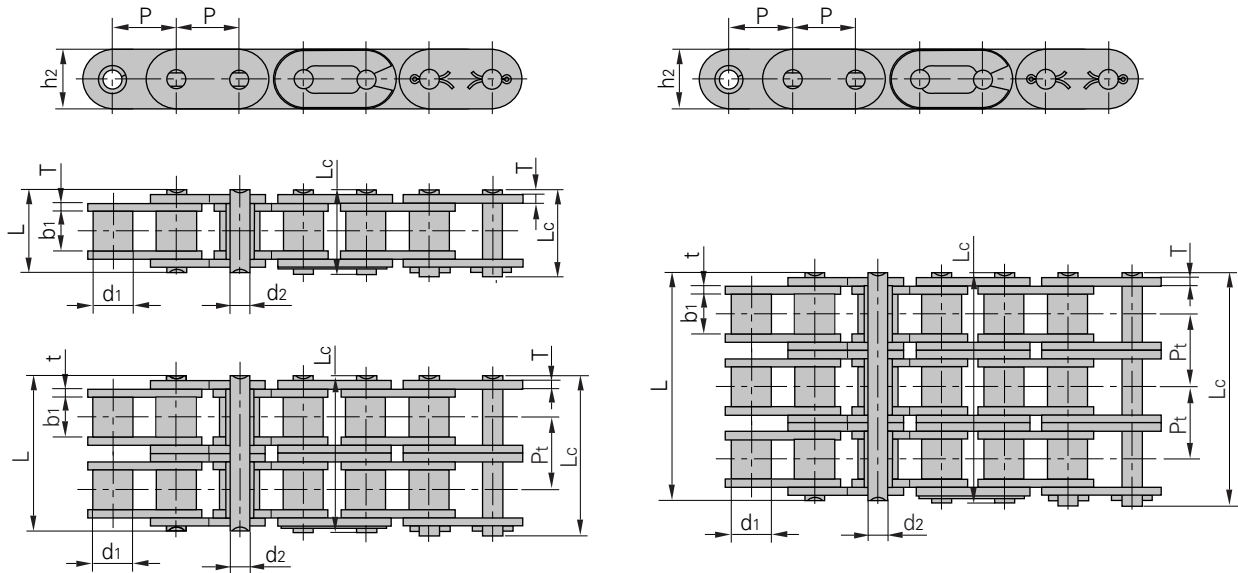
DIN/ISO Chain No.	ANSI Chain No.	P	G	F1	W	h4	d4	C	F2	d5
		mm	mm	mm	mm	mm	mm	mm	mm	mm
208A	2040	25.40	19.1	25.4	39.6	9.1	3.4	11.1	20.5	5.5
210A	2050	31.75	23.8	31.8	49.0	11.1	5.5	14.3	25.0	6.6
212A	2060	38.10	28.6	42.9	67.8	14.7	5.5	17.5	32.9	9.2
216A	2080	50.80	38.1	55.6	87.8	19.1	6.8	22.2	43.5	11.0
220A	2100	63.50	47.6	66.6	107.5	23.4	9.2	28.6	50.4	13.0
224A	2120	76.20	57.2	79.3	121.4	27.8	10.5	33.3	55.5	15.0
208B		25.40	23.2	25.4	39.6	9.1	4.5	11.1	20.5	5.5
210B		31.75	23.8	31.8	49.0	11.1	5.5			
212B		38.10	35.0	38.1	57.0	14.7	6.6			
216B		50.80	44.0	50.8	84.0	19.1	6.6			
220B		63.50	52.0	63.5	104.0	23.4	8.4			
224B		76.20	60.0	76.2	120.0	27.8	10.5			

# Roller Chains With Straight Side Plates (A Series)



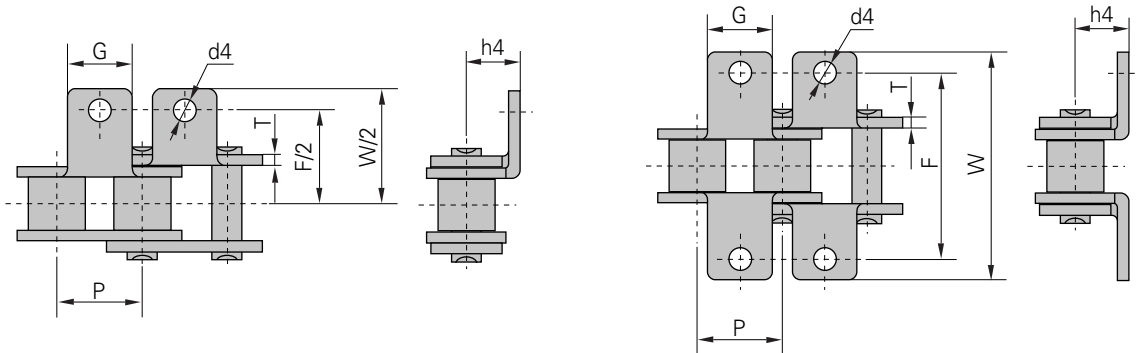
DIN/ISO Chain No.	ANSI Chain No.	Pitch	Roller Diameter	Width Between Inner Plates	Pin Diameter	Pin Length		Inner Plate Depth	Plate Thickness	Transverse Pitch	Ultimate Tensile Strength	Average Tensile Strength	Weight Per Meter
		P	d1 max	b1 min	d2 max	L max	Lc max	h2 max	T max	Pt	Q min	Q0	q
		mm	mm	mm	mm	mm	mm	mm	mm	mm	kN/LB	kN	kg/m
	*C35	9.525	5.08	4.77	3.58	13.3	14.3	9.00	1.30		7.9/1795	10.8	0.41
08AF-1	C40	12.700	7.95	7.85	3.96	16.6	18.8	12.00	1.50		14.1/3273	17.5	0.73
10AF-1	C50	15.875	10.16	9.40	5.08	20.7	23.3	15.09	2.03		22.2/5045	29.4	1.23
12AF-1	C60	19.050	11.91	12.57	5.94	25.9	28.3	18.0/18.2	2.42		31.8/7227	41.5	1.8/1.83
16AF-1	C80	25.400	15.88	15.75	7.92	32.7	36.5	24.00	3.25		56.7/12886	69.4	3.09
20AF-1	C100	31.750	19.05	18.90	9.53	40.4	44.7	30.00	4.00		88.5/20114	109.2	4.56
24AF-1	C120	38.100	22.23	25.22	11.10	50.3	54.3	35.70	4.80		127.0/28864	156.3	6.86
28AF-1	C140	44.450	25.40	25.22	12.70	54.4	59.0	41.00	5.60		172.4/39182	212.0	8.49
32AF-1	C160	50.800	28.58	31.55	14.27	64.8	69.6	47.80	6.40		226.8/51545	278.9	11.50
08AF-2	C40-2	12.700	7.95	7.85	3.96	31.0	33.2	12.00	1.50	14.38	28.2/6409	35.9	1.43
10AF-2	C50-2	15.875	10.16	9.40	5.08	38.9	41.4	15.09	2.03	18.11	44.4/10091	58.1	2.42
12AF-2	C60-2	19.050	11.91	12.57	5.94	48.8	51.1	18.0/18.2	2.42	22.78	63.6/14455	82.1	3.58/3.62
16AF-2	C80-2	25.400	15.88	15.75	7.92	62.7	65.8	24.00	3.25	29.29	113.4/25773	141.8	6.12
20AF-2	C100-2	31.750	19.05	18.90	9.53	76.4	80.5	30.00	4.00	35.76	177.0/40227	219.4	9.08
24AF-2	C120-2	38.100	22.23	25.22	11.10	95.8	99.7	35.70	4.80	45.44	254.0/57727	314.9	13.60
28AF-2	C140-2	44.450	25.40	25.22	12.70	103.3	107.9	41.00	5.60	48.87	344.8/78364	427.5	16.86
32AF-2	C160-2	50.800	28.58	31.55	14.27	123.3	128.1	47.80	6.40	58.55	453.6/103091	562.4	22.90
08AF-3	C40-3	12.700	7.95	7.85	3.96	45.4	47.6	12.00	1.50	14.38	42.3/9614	50.0	2.14
10AF-3	C50-3	15.875	10.16	9.40	5.08	57.0	59.5	15.09	2.03	18.11	66.6/15136	77.8	3.62
12AF-3	C60-3	19.050	11.91	12.57	5.94	71.5	73.9	18.0/18.2	2.42	22.78	95.4/21682	111.1	5.36/5.41
16AF-3	C80-3	25.400	15.88	15.75	7.92	91.7	95.1	24.00	3.25	29.29	170.1/38659	198.4	9.10
20AF-3	C100-3	31.750	19.05	18.90	9.53	112.2	116.3	30.00	4.00	35.76	265.5/60341	309.6	13.60
24AF-3	C120-3	38.100	22.23	25.22	11.10	141.4	145.2	35.70	4.80	45.44	381.0/86591	437.2	20.43
28AF-3	C140-3	44.450	25.40	25.22	12.70	152.2	156.8	41.00	5.60	48.87	517.2/117545	593.3	25.23
32AF-3	C160-3	50.800	28.58	31.55	14.27	181.8	186.6	47.80	6.40	58.55	680.4/154636	780.6	34.19

\*Bushing chain: d1 in the table indicate the external diameter of the bushing.



Conveyor Chains

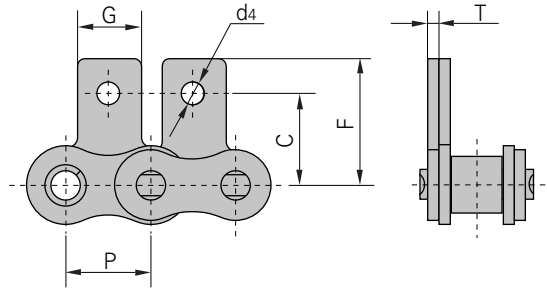
DIN/ISO Chain No.	Pitch	Roller Diameter	Width Between Inner Plates	Pin Diameter	Pin Length		Inner Plate Depth	Plate Thickness	Transverse Pitch	Ultimate Tensile Strength	Average Tensile Strength	Weight Per Meter
	p	d1 max	b1 min	d2 max	L max	Lc max	h2 max	t/T max	Pt	Q min	Q0	q
	mm	mm	mm	mm	mm	mm	mm	mm	mm	kN/LB	kN	kg/m
08BF-1	12.700	8.51	7.75	4.45	16.7	18.2	11.8	1.60		18.0/4091	19.5	0.80
10BF-1	15.875	10.16	9.65	5.08	19.5	20.9	14.7	1.70		22.4/5091	27.9	1.06
12BF-1	19.050	12.07	11.68	5.72	22.5	25.2	16.0	1.85		29.0/6591	32.2	1.32
16BF-1	25.400	15.88	17.02	8.28	36.1	39.1	21.0/24.0	4.15/3.1		60.0/13636	72.8	3.08/3.49
20BF-1	31.750	19.05	19.56	10.19	41.3	45.0	26.4	4.5/3.5		95.0/21591	106.7	4.16
24BF-1	38.100	25.40	25.40	14.63	53.4	57.8	33.2	6.0/4.8		160.0/36364	178.0	7.47
28BF-1	44.450	27.94	30.99	15.90	65.1	69.5	36.7	7.5/6.0		200.0/45455	222.0	9.90
32BF-1	50.800	29.21	30.99	17.81	66.0	71.0	42.0	7.0/6.0		250.0/56818	277.5	10.45
08BF-2	12.700	8.51	7.75	4.45	31.2	32.2	11.8	1.60	13.92	32.0/7273	38.7	1.45
10BF-2	15.875	10.16	9.65	5.08	36.1	37.5	14.7	1.70	16.59	44.5/10114	57.8	2.00
12BF-2	19.050	12.07	11.68	5.72	42.0	44.7	16.0	1.85	19.46	57.8/13136	66.1	2.62
16BF-2	25.400	15.88	17.02	8.28	68.0	71.0	21.0/24.0	4.15/3.1	31.88	106.0/24091	133.0	6.10/6.92
20BF-2	31.750	19.05	19.56	10.19	77.8	81.5	26.4	4.5/3.5	36.45	170.0/38636	211.2	8.23
24BF-2	38.100	25.40	25.40	14.63	101.7	106.2	33.2	6.0/4.8	48.36	280.0/63636	319.2	14.77
28BF-2	44.450	27.94	30.99	15.90	124.6	129.1	36.7	7.5/6.0	59.56	360.0/81818	406.8	19.82
32BF-2	50.800	29.21	30.99	17.81	124.6	129.6	42.0	7.0/6.0	58.55	450.0/102273	508.5	20.94
08BF-3	12.700	8.51	7.75	4.45	45.1	46.1	11.8	1.60	13.92	47.5/10795	57.8	2.10
10BF-3	15.875	10.16	9.65	5.08	52.7	54.1	14.7	1.70	16.59	66.7/15159	84.5	2.87
12BF-3	19.050	12.07	11.68	5.72	61.5	64.2	16.0	1.85	19.46	86.7/19705	101.8	3.89
16BF-3	25.400	15.88	17.02	8.28	99.8	102.9	21.0/24.0	4.15/3.1	31.88	160.0/36364	203.7	9.12/10.34
20BF-3	31.750	19.05	19.56	10.19	114.2	117.9	26.4	4.5/3.5	36.45	250.0/56818	290.0	11.34
24BF-3	38.100	25.40	25.40	14.63	150.1	154.6	33.2	6.0/4.8	48.36	425.0/96591	493.0	22.10
28BF-3	44.450	27.94	30.99	15.90	184.2	188.7	36.7	7.5/6.0	59.56	530.0/120454	609.5	29.64
32BF-3	50.800	29.21	30.99	17.81	183.2	188.2	42.0	7.0/6.0	58.55	670.0/152273	770.5	31.27



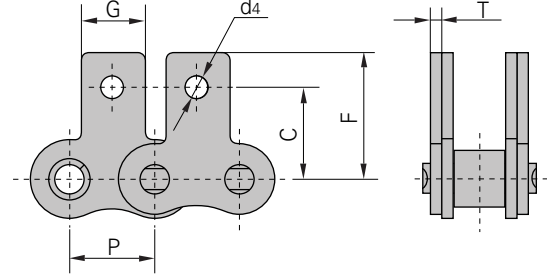
DIN/ISO Chain No.	ANSI Chain No.	P	G	F	W	T	h4	d4
		mm	mm	mm	mm	mm	mm	mm
06C	35	9.525	7.9	19.00	28.6	1.30	6.35	3.4
08A	40	12.700	9.5	25.40	35.2	1.50	7.90	3.4
085	41	12.700	9.5	24.00	33.4	1.30	6.90	3.6
10A	50	15.875	12.7	31.75	46.2	2.03	10.30	5.5
12A	60	19.050	15.9	38.10	55.6	2.42	11.90	5.5
16A	80	25.400	19.1	50.80	64.8	3.25	15.90	6.8
20A	100	31.750	25.4	63.50	87.3	4.00	19.80	9.2
24A	120	38.100	28.6	76.20	108.5	4.80	23.00	9.8
28A	140	44.450	34.9	88.90	123.0	5.60	28.60	11.4
32A	160	50.800	38.1	101.60	142.8	6.40	31.75	13.1
40A	200	63.500	50.8	127.00	179.0	8.00	42.88	16.3
*06B		9.525	8.0	19.04	27.0	1.30	6.50	3.5
08B		12.700	9.5	25.40	36.4	1.60	8.90	4.5
10B		15.875	14.3	31.75	44.6	1.70	10.31	5.3
12B		19.050	16.0	38.10	52.4	1.85	13.46	6.4
16B		25.400	19.1	50.80	72.6	3.10	15.88	6.4
20B		31.750	35.0	63.50	100.5	3.50	19.80	9.0
24B		38.100	30.0	76.20	108.4	4.80	26.67	10.5
28B		44.450	35.0	88.90	123.0	6.00	28.58	13.1
32B		50.800	38.1	101.60	142.8	6.00	31.75	13.1

\*Straight side plates

SA-1/M1 (one side)

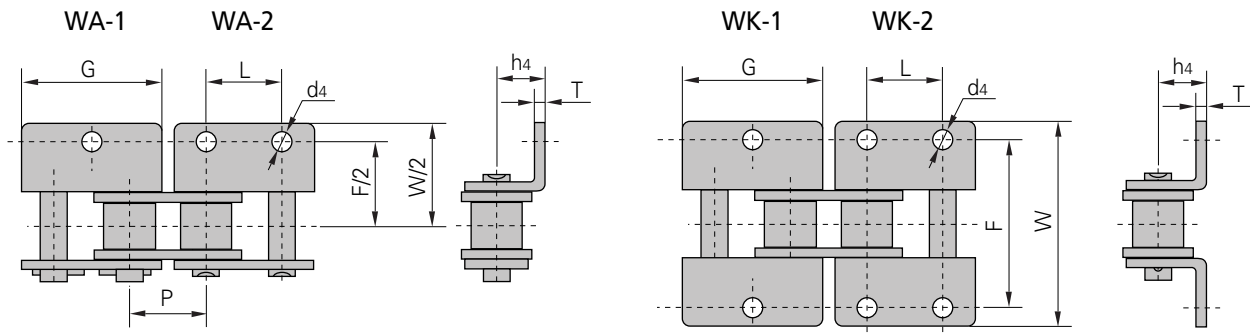


SK-1/M1 (both sides)

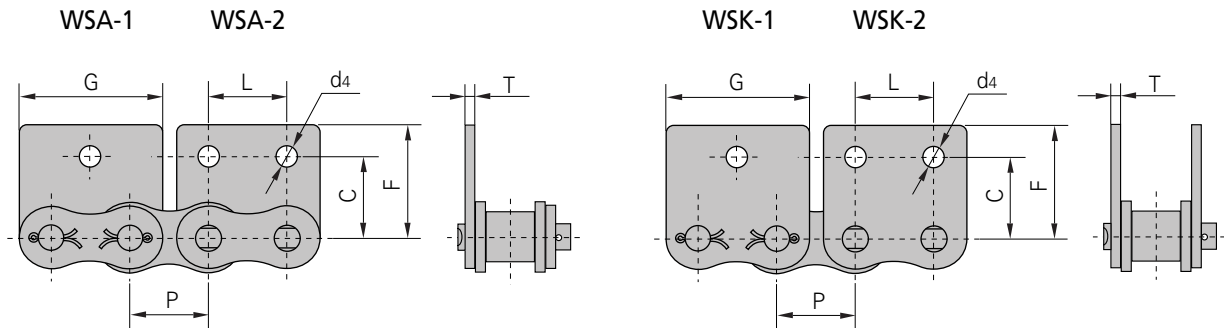


DIN/ISO Chain No.	ANSI Chain No.	P	G	C	F	T	d4
		mm	mm	mm	mm	mm	mm
06C	35	9.525	7.9	9.50	14.55	1.30	3.4
08A	40	12.700	9.5	12.70	19.05	1.50	3.4
085	41	12.700	9.5	11.85	16.55	1.30	3.6
10A	50	15.875	12.7	15.90	25.25	2.03	5.5
12A	60	19.050	15.9	18.30	29.33	2.42	5.5
16A	80	25.400	19.1	24.60	34.70	3.25	6.8
20A	100	31.750	25.4	31.80	43.30	4.00	9.2
24A	120	38.100	28.6	36.50	51.60	4.80	9.8
28A	140	44.450	34.9	44.50	62.00	5.60	11.4
32A	160	50.800	38.1	50.80	69.85	6.40	13.1
40A	200	63.500	50.8	63.50	88.9	8.00	16.3
*06B		9.525	8.0	9.52	13.50	1.30	3.5
08B		12.700	9.5	13.35	18.90	1.60	4.3
10B		15.875	14.3	16.50	22.95	1.70	5.3
12B		19.050	16.0	21.45	28.60	1.85	6.4
16B		25.400	19.1	23.15	34.00	3.10	6.4
20B		31.750	35.0	30.50	45.70	3.50	9.0

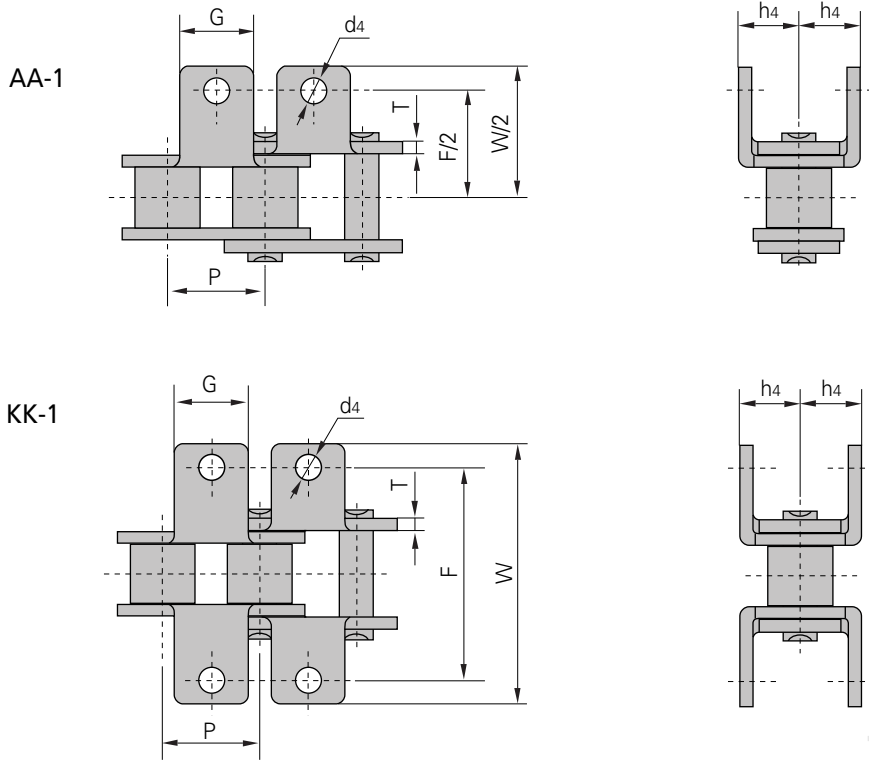
\*Straight side plates



DIN/ISO Chain No.	ANSI Chain No.	P	G	L	F	W	T	h4	d4
		mm	mm	mm	mm	mm	mm	mm	mm
06C	35	9.525	17.32	9.525	19.00	28.6	1.30	6.35	2.8
08A	40	12.700	23.00	12.700	25.40	35.6	1.50	7.90	3.4
085	41	12.700	22.30	12.700	24.00	35.0	1.30	7.20	4.85
10A	50	15.875	28.80	15.875	31.75	46.8	2.03	10.30	5.5
12A	60	19.050	34.65	19.050	38.10	56.4	2.42	11.90	5.5
16A	80	25.400	45.90	25.400	50.80	73.2	3.25	15.90	6.8
20A	100	31.750	57.65	31.750	63.50	89.8	4.00	19.80	9.2
24A	120	38.100	69.30	38.100	76.20	108.8	4.80	23.00	9.8
28A	140	44.450	80.45	44.450	88.90	123.0	5.60	28.60	11.4
32A	160	50.800	92.00	50.800	101.60	142.8	6.40	31.75	13.1
40A	200	63.500	115.5	63.500	127.00	179.0	8.00	42.88	16.3
08B		12.700	24.00	12.700	25.40	36.4	1.60	8.90	4.3
10B		15.875	29.58	15.875	31.80	44.6	1.70	10.31	5.3
12B		19.050	34.05	19.050	38.10	52.4	1.85	13.46	6.4
16B		25.400	46.40	25.400	50.80	72.6	3.10	15.88	6.4
20B		31.750	58.10	31.750	63.00	100.5	3.50	19.80	9.0
24B		38.100	71.30	38.100	76.20	108.4	4.80	26.67	10.5
28B		44.450	81.10	44.450	88.90	123.0	6.00	28.58	13.1
32B		50.800	92.80	50.800	101.60	142.8	6.00	31.75	13.1



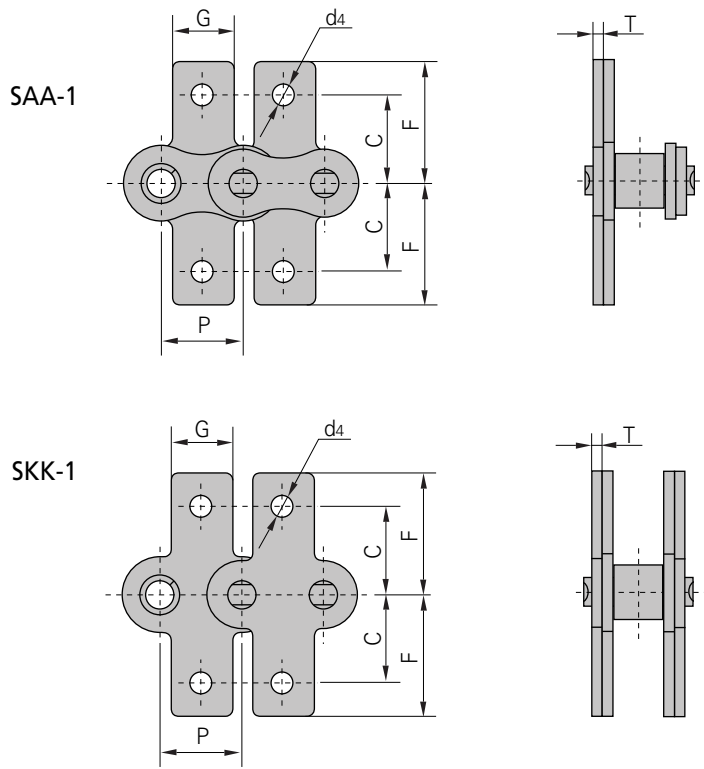
DIN/ISO Chain No.	ANSI Chain No.	P	G	L	C	F	T	d4
		mm	mm	mm	mm	mm	mm	mm
06C	35	9.525	17.32	9.525	9.50	14.55	1.30	2.8
08A	40	12.700	23.00	12.700	12.70	17.40	1.50	3.4
085	41	12.700	21.20	12.700	11.85	16.55	1.30	3.6
10A	50	15.875	28.80	15.875	15.90	23.05	2.03	5.5
12A	60	19.050	34.65	19.050	18.30	26.86	2.42	5.5
16A	80	25.400	45.90	25.400	24.60	35.45	3.25	6.8
20A	100	31.750	57.65	31.750	31.80	44.00	4.00	9.2
24A	120	38.100	69.30	38.100	36.50	51.60	4.80	9.8
28A	140	44.450	80.45	44.450	44.50	62.00	5.60	11.4
32A	160	50.800	92.00	50.800	50.80	69.85	6.40	13.1
40A	200	63.500	115.5	63.500	63.50	88.90	8.00	16.3
08B		12.700	23.30	12.700	13.35	18.90	1.60	4.3
10B		15.875	29.58	15.875	16.50	22.95	1.70	5.3
12B		19.050	34.05	19.050	21.45	28.60	1.85	6.4
16B		25.400	46.40	25.400	23.15	34.00	3.10	6.4
20B		31.750	58.10	31.750	30.50	45.70	3.50	9.0



TM

DIN/ISO Chain No.	ANSI Chain No.	P	G	F	W	T	h <sub>4</sub>	d <sub>4</sub>
		mm	mm	mm	mm	mm	mm	mm
08A	40	12.700	9.5	25.40	35.2	1.50	7.90	3.4
10A	50	15.875	12.7	31.75	46.2	2.03	10.30	5.5
12A	60	19.050	15.9	38.10	55.6	2.42	11.90	5.5
16A	80	25.400	19.1	50.80	64.8	3.25	15.90	6.8
20A	100	31.750	25.4	63.50	87.3	4.00	19.80	9.2
*06B		9.525	8.0	19.04	27.0	1.30	6.50	3.5
08B		12.700	9.5	25.40	36.4	1.60	8.90	4.5
10B		15.875	14.3	31.75	44.6	1.70	10.31	5.3
12B		19.050	16.0	38.10	52.4	1.85	13.46	6.4
16B		25.400	19.1	50.80	72.6	3.10	15.88	6.4
20B		31.750	35.0	63.50	100.5	3.50	19.80	9.0

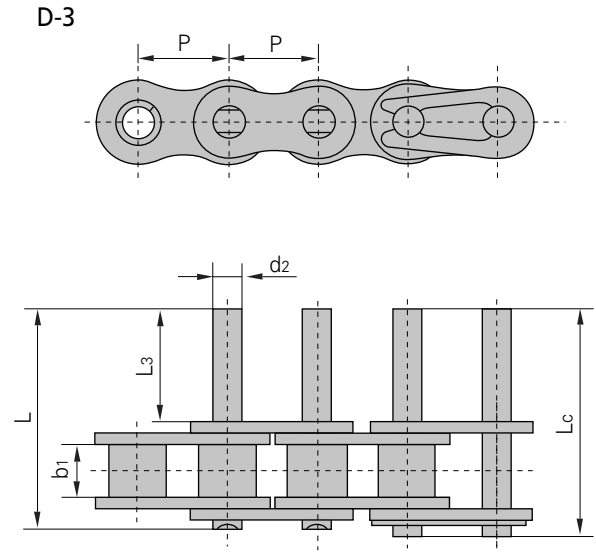
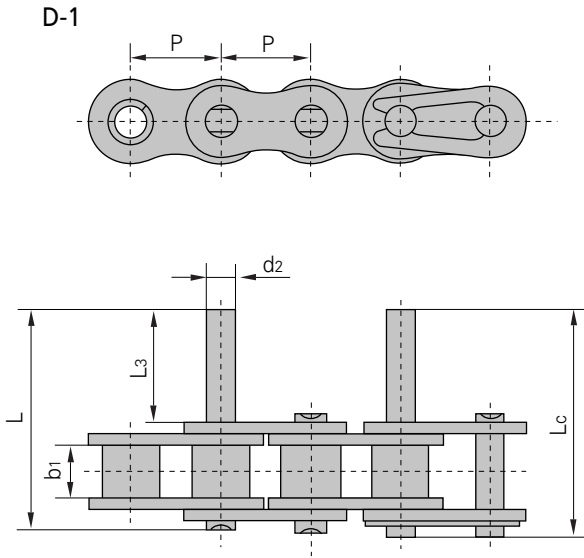
\*Straight side plates



TM

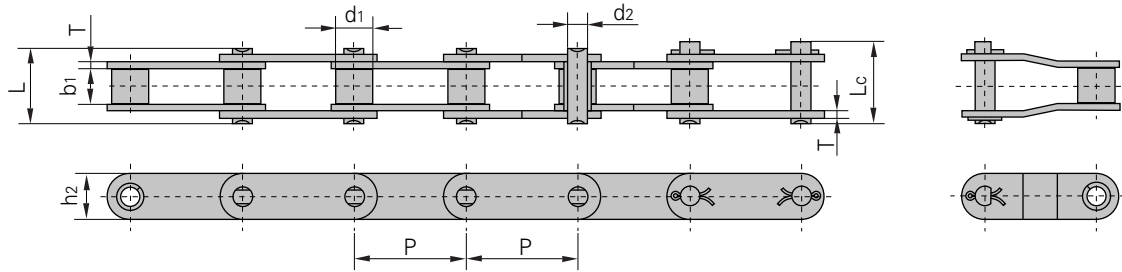
DIN/ISO Chain No.	ANSI Chain No.	P	G	C	F	T	d4
		mm	mm	mm	mm	mm	mm
08A	40	12.700	9.5	12.70	19.05	1.50	3.4
10A	50	15.875	12.7	15.90	25.25	2.03	5.5
12A	60	19.050	15.9	18.30	29.33	2.42	5.5
16A	80	25.400	19.1	24.60	34.70	3.25	6.8
20A	100	31.750	25.4	31.80	43.30	4.00	9.2
*06B		9.525	8.0	9.52	13.50	1.30	3.5
08B		12.700	9.5	13.35	18.90	1.60	4.3
10B		15.875	14.3	16.50	22.95	1.70	5.3
12B		19.050	16.0	21.45	28.60	1.85	6.4
16B		25.400	19.1	23.15	34.00	3.10	6.4
20B		31.750	35.0	30.50	45.70	3.50	9.0

\*Straight side plates

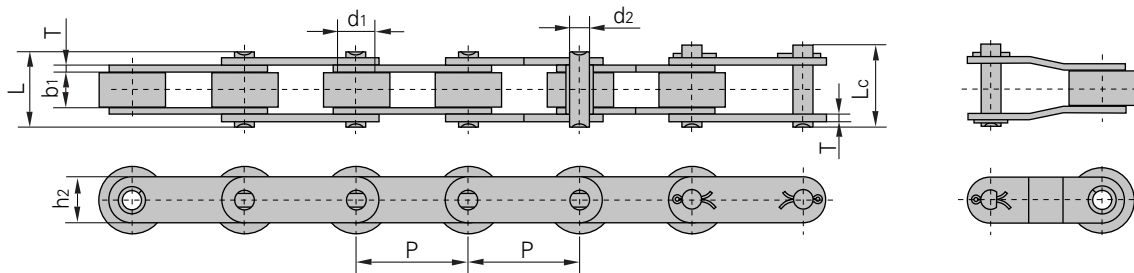


DIN/ISO Chain No.	ANSI Chain No.	P	b <sub>1</sub>	d <sub>2</sub>	L <sub>3</sub>	L	L <sub>c</sub>
		mm	mm	mm	mm	mm	mm
06C	35	9.525	4.77	3.58	9.5	20.8	21.6
08A	40	12.700	7.85	3.96	9.5	25.1	26.2
10A	50	15.875	9.40	5.08	11.9	31.3	33.1
12A	60	19.050	12.57	5.94	14.3	38.6	40.6
16A	80	25.400	15.75	7.92	19.1	50.3	53.3
20A	100	31.750	18.90	9.53	23.8	61.8	66.1
24A	120	38.100	25.22	11.10	28.6	76.4	80.4
28A	140	44.450	25.22	12.70	33.3	84.8	89.4
32A	160	50.800	31.55	14.27	38.1	99.6	104.4
08B		12.700	7.75	4.45	9.5	25.1	26.6
10B		15.875	9.65	5.08	11.9	30.1	31.5
12B		19.050	11.68	5.72	14.3	35.4	37.1
16B		25.400	17.02	8.28	19.1	53.0	54.3

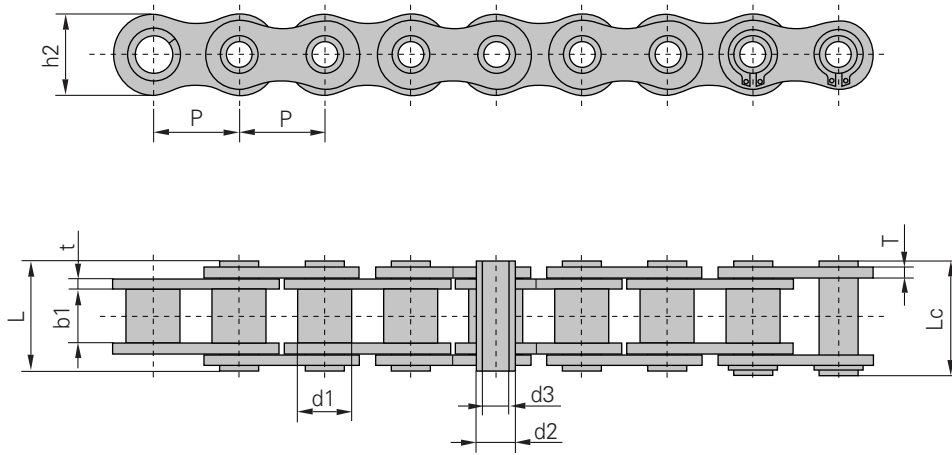
**Small Roller Type**



**Large Roller Type**

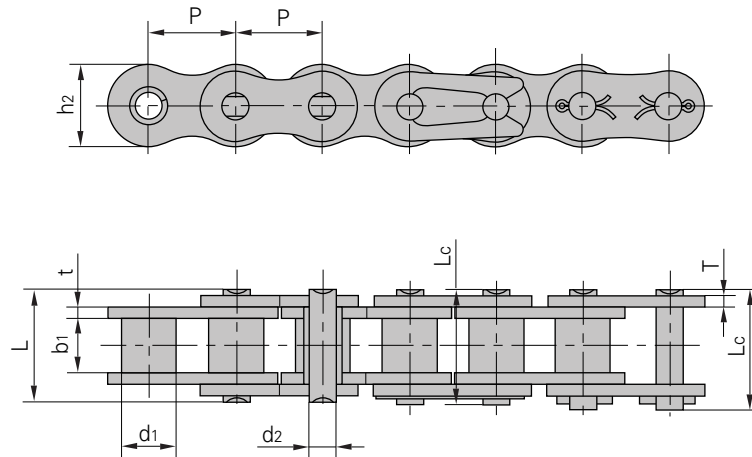


DIN/ISO Chain No.	ANSI Chain No.	Pitch	Roller Diameter	Width Between Inner Plates	Pin Diameter	Pin Length		Inner Plate Depth	Plate Thickness	Ultimate Tensile Strength	Average Tensile Strength	Weight Per Meter
		p	d1 max	b1 min	d2 max	L max	Lc max	h2 max	T max	Q min	Q0	q
		mm	mm	mm	mm	mm	mm	mm	mm	kN/LB	kN	kg/m
C208A C208AL	C2040 C2042	25.40	7.95 15.88	7.85	3.96	16.6	17.8	12.0	1.50	14.1/3205	16.7	0.50 0.84
C208AH	C2040H	25.40	7.95	7.85	3.96	18.8	19.9	12.0	2.03	14.1/3205	17.2	0.65
C208B C208BL		25.40	8.51 15.88	7.75	4.45	16.7	18.2	11.8	1.60	18.0/4091	19.4	0.55 0.89
C210A C210AL	C2050 C2052	31.75	10.16 19.05	9.40	5.08	20.7	22.2	15.0	2.03	22.2/5045	28.1	0.78 1.27
C212A C212AL	C2060 C2062	38.10	11.91 22.23	12.57	5.94	25.9	27.7	18.0	2.42	31.8/7227	36.8	1.12 1.61
C212AH C212AHL	C2060H C2062H	38.10	11.91 22.23	12.57	5.94	29.2	31.6	18.0	3.25	31.8/7227	41.6	1.44 2.07
C216A C216AL	C2080 C2082	50.80	15.88 28.58	15.75	7.92	32.7	36.5	24.0	3.25	56.7/12886	65.7	2.08 3.12
C216AH C216AHL	C2080H C2082H	50.80	15.88 28.58	15.75	7.92	36.2	39.4	24.0	4.00	56.7/12886	70.0	2.54 3.58
C220A C220AL	C2100 C2102	63.50	19.05 39.67	18.90	9.53	40.4	44.7	30.0	4.00	88.5/20114	102.6	3.01 4.83
C220AH C220AHL	C2100H C2102H	63.50	19.05 39.67	18.90	9.53	43.6	46.9	30.0	4.80	88.5/20114	112.4	3.56 5.38
C224A C224AL	C2120 C2122	76.20	22.23 44.45	25.22	11.10	50.3	54.3	35.7	4.80	127.0/28864	147.3	4.66 7.66
C224AH C224AHL	C2120H C2122H	76.20	22.23 44.45	25.22	11.10	53.5	57.5	35.7	5.60	127.0/28864	160.9	5.26 8.26
C232A C232AL	C2160 C2162	101.60	28.58 57.15	31.75	14.27	64.8	69.6	47.8	6.40	226.8/51545	278.9	8.15 13.00
C232AH C232AHL	C2160H C2162H	101.60	28.58 57.15	31.75	14.27	68.2	73.0	47.8	7.20	226.8/51545	285.8	9.06 12.77



Chain No.	Pitch	Bush Diameter	Width Between Inner Plates	Pin Diameter		Pin Length		Inner Plate Depth	Plate Thickness	Ultimate Tensile Strength	Average Tensile Strength	Weight Per Meter
	P	d <sub>1</sub> max	b <sub>1</sub> min	d <sub>2</sub> max	d <sub>3</sub> min	L max	L <sub>c</sub> max	h <sub>2</sub> max	t/T max	Q min	Q <sub>0</sub>	q
	mm	mm	mm	mm	mm	mm	mm	mm	mm	kN/LB	kN	kg/m
08BHPF	12.700	8.51	7.75	6.55	4.50	16.4	17.6	11.80	1.6/1.3	11.1/2523	12.1	0.56
08BHPF5	12.700	8.51	7.75	6.30	4.50	16.8	18.0	12.00	1.60	9.6/2182	10.6	0.62
10BHPF3	15.875	10.16	9.65	7.02	5.13	19.5	20.5	14.70	1.70	10.0/2272	11.5	0.86
10BHPF4	15.875	10.16	9.50	7.20	5.00	19.8	21.3	14.00	2.03/1.6	12.5/2840	14.0	0.82
12BHPF2	19.050	12.07	11.68	8.09	6.00	22.7	23.9	16.10	1.85	14.0/3180	16.0	0.82
12BHPF3	19.050	12.07	11.70	8.22	5.75	23.6	24.9	16.20	2.42/1.85	16.0/3636	18.0	1.14
40HP	12.700	7.95	7.85	5.63	4.00	16.5	17.6	12.00	1.50	11.0/2500	12.2	0.54
50HP	15.875	10.16	9.40	7.03	5.13	20.7	21.9	15.09	2.03	20.0/4545	22.6	0.91
60HP	19.050	11.91	12.70	8.31	6.00	25.8	26.8	18.00	2.42	24.0/5455	26.9	1.29
60HPF1	19.050	11.91	12.70	8.31	5.01	25.5	26.8	18.00	2.42	28.0/6364	30.9	1.37
80HP	25.400	15.88	15.75	11.40	8.05	32.5	33.8	24.00	3.25	50.0/11364	52.0	2.26
80HPF2	25.400	15.88	15.75	11.40	8.40	32.5	33.8	24.00	3.25	45.0/10227	48.0	2.23

Stainless steel chains are suitable for corrosive conditions involving food, chemicals pharmaceuticals, etc. Also suitable for high and low temperature conditions

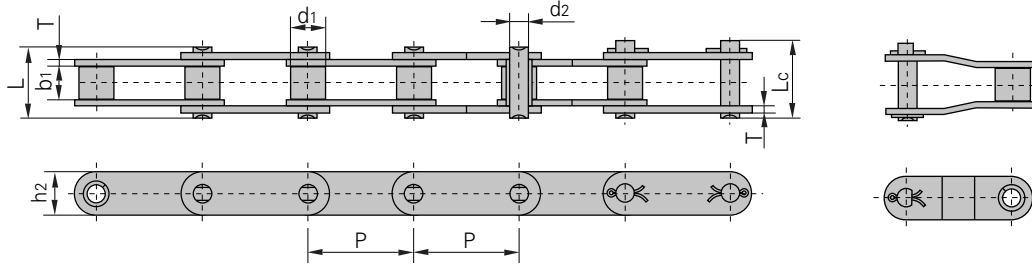


Chain No.	Pitch	Roller Diameter	Width Between Inner Plates	Pin Diameter	Pin Length		Inner Plate Depth	Plate Thickness	Breaking Load	Weight Per Meter
	p	d1 max	b1 min	d2 max	L max	Lc max	h2 max	t/T max	Q	q
	mm	mm	mm	mm	mm	mm	mm	mm	kN	kg/m
*25SS	6.350	3.30	3.18	2.31	7.9	8.4	6.00	0.8	2.5/568	0.15
*35SS	9.525	5.08	4.77	3.58	12.4	13.17	9.00	1.30	5.5/1250	0.33
40SS	12.700	7.95	7.85	3.96	16.6	17.8	2.00	1.50≠	9.6/2182	0.63
41SS	12.700	7.77	6.25	3.58	13.75	15.0	9.91	1.30	6.0/1360	0.46
50SS	15.875	10.16	9.40	5.08	20.7	22.2	15.09	2.03	15.2/3455	1.03
60SS	19.050	11.91	12.57	5.94	25.9	27.7	18.00	2.42	21.7/4932	1.51
80SS	25.400	15.88	15.75	7.92	32.7	35.0	24.00	3.25	38.9/8841	2.62
100SS	31.750	19.05	18.90	9.53	40.4	44.7	30.00	4.00	60.0/13636	3.94
120SS	38.100	22.23	25.22	11.10	50.3	54.3	35.70	4.80	72.5/16477	5.72
140SS	44.450	25.40	25.22	12.70	54.4	59.0	41.0	5.60	94.0/21363	7.70
04BSS	6.000	4.00	2.80	1.85	6.80	7.8	5.00	0.60	2.0/455	0.11
05BSS	8.000	5.00	3.00	2.31	8.20	8.9	7.10	0.80	3.5/795	0.20
#06BSS	9.525	6.35	5.72	3.28	13.15	14.1	8.20	1.30≠	6.2/1409	0.41
08BSS	12.700	8.51	7.75	4.45	16.7	18.2	11.80	1.60	12.0/2727	0.70
10BSS	15.875	10.16	9.65	5.08	19.5	20.9	14.70	1.70	14.5/3295	0.94
12BSS	19.050	12.07	11.68	5.72	22.5	24.2	16.00	1.85	18.5/4205	1.16
16BSS	25.400	15.88	17.02	8.28	36.1	37.4	21.00	4.15/3.1	40.0/9091	2.73
20BSS	31.750	19.05	19.56	10.19	41.3	45.0	26.40	4.5/3.5	59.0/13409	3.73
24BSS	38.100	25.40	25.40	14.63	53.4	57.8	33.20	6.0/4.8	104.0/25454	7.20
32BSS	50.800	29.21	30.99	17.81	66.0	71.0	42.00	7.0/6.0	150.0/34090	10.22

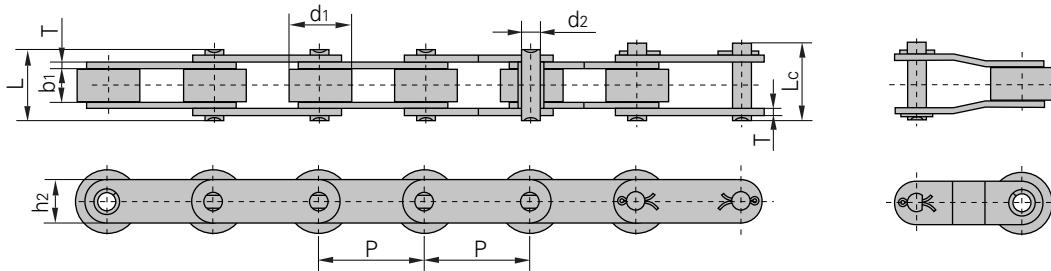
\*Bushing chain: d1 in the table indicate the external diameter of the bushing.

# Straight side plates.

## Small Roller Type



## Large Roller Type

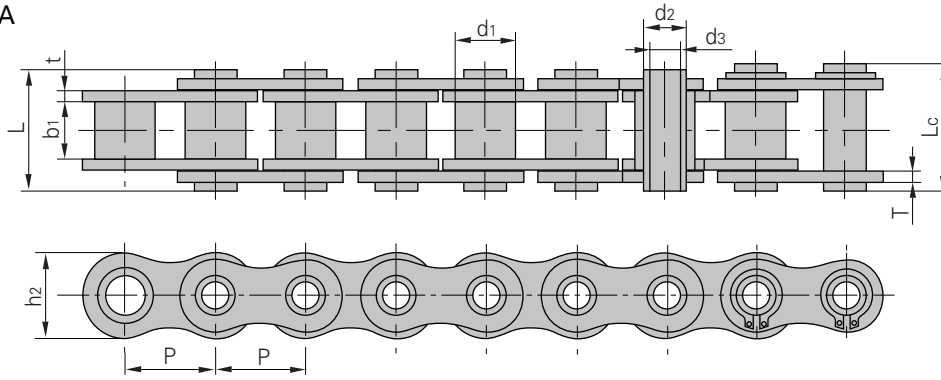


Stainless Steel Chains

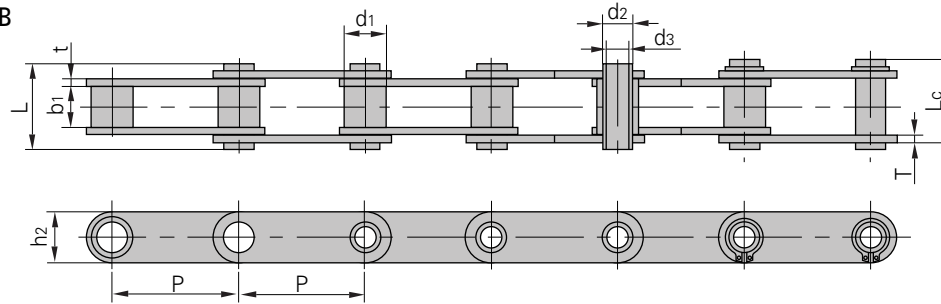
TM

Chain No.	Pitch	Roller Diameter	Width Between Inner Plates	Pin Diameter	Pin Length		Inner Plate Depth	Plate Thickness	Breaking Load	Weight Per Meter
	P	d1 max	b1 min	d2 max	L max	Lc max	h2 max	T max	Q min	q
	mm	mm	mm	mm	mm	mm	mm	mm	kN/LB	kg/m
C2040SS C2042SS	25.40	7.95 15.88	7.85	3.96	16.6	17.8	12.0	1.50	9.6/2182	0.51 0.85
C2040HSS	25.40	7.95	7.85	3.96	18.8	19.9	12.0	2.03	9.6/2182	0.66
C208BSS C208BLSS	25.40	8.51 15.88	7.75	4.45	16.7	18.2	11.8	1.60	12.0/2727	0.56 0.90
C2050SS C2052SS	31.75	10.16 19.05	9.40	5.08	20.7	22.2	15.0	2.03	15.2/3455	0.79 1.29
C2060SS C2062SS	38.10	11.91 22.23	12.57	5.94	25.9	27.7	18.0	2.42	21.7/4932	1.13 1.63
C2060HSS C2062HSS	38.10	11.91 22.23	12.57	5.94	29.2	31.6	18.0	3.25	21.7/4932	1.46 2.10
C2080SS C2082SS	50.80	15.88 28.58	15.75	7.92	32.7	36.5	24.0	3.25	38.9/8841	2.11 3.16
C2080HSS C2082HSS	50.80	15.88 28.58	15.75	7.92	36.2	39.4	24.0	4.00	38.9/8841	2.57 3.63
C2100SS C2102SS	63.50	19.05 39.67	18.90	9.53	40.4	44.7	30.0	4.00	60.0/13636	3.05 4.89
C2100HSS C2102HSS	63.50	19.05 39.67	18.90	9.53	43.6	46.9	30.0	4.80	60.0/13636	3.61 5.45

Type A



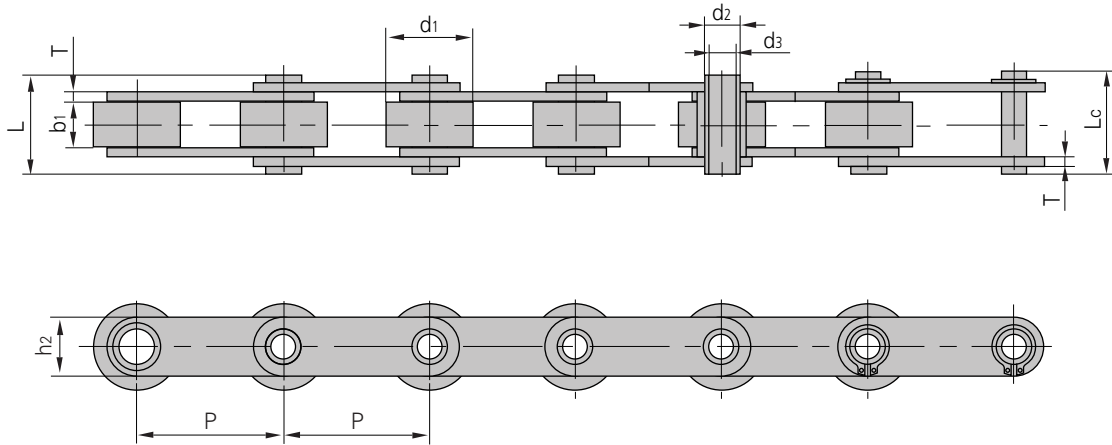
Type B



TM

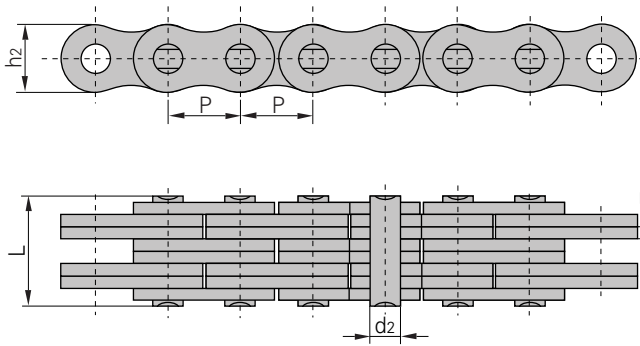
Chain No.	Pitch	Bush Diameter	Width Between Inner Plates	Pin Diameter		Pin Length		Inner Plate Depth	Plate Thickness	Breaking Load	Weight Per Meter	Type
	p	d1 max	b1 min	d2 max	d3 max	L max	Lc max	h2 max	t/T max	Q min	q	
	mm	mm	mm	mm	mm	mm	mm	mm	mm	kN/LB	kg/m	
08BHPFSS	12.700	8.51	7.75	6.55	4.50	16.4	17.6	11.80	1.6/1.3	7.8/1773	0.57	A
40HPSS	12.700	7.95	7.85	5.63	4.00	16.5	17.6	12.00	1.50	7.7/1750	0.55	A
50HPSS	15.875	10.16	9.40	7.03	5.13	20.7	21.9	15.09	2.03	14.0/3182	0.92	A
60HPSS	19.050	11.91	12.70	8.31	6.00	25.8	26.8	18.00	2.42	16.8/3818	1.31	A
*12BHPSS	19.050	12.07	11.68	6.50	4.00	21.6	22.8	15.90	1.85	16.5/3750	1.10	A
80HPSS	25.400	15.88	15.75	11.40	8.05	32.5	33.8	24.00	3.25	35.0/7955	2.29	A
C2040HPSS	25.400	7.95	7.85	5.63	4.00	16.5	17.6	12.00	1.50	7.7/1750	0.47	B
C2050HPSS	31.750	10.16	9.40	7.22	5.12	20.5	21.8	15.00	2.03	14.3/3250	0.77	B
C2060HPSS	38.100	11.91	12.70	8.31	6.00	25.8	26.8	17.00	2.42	16.8/3818	1.03	B
C2080HPSS	50.800	15.88	15.75	11.40	8.05	32.5	33.8	24.00	3.25	35.0/7955	1.83	B
*HB50.8SS	50.800	30.00	10.50	11.40	8.20	27.4	28.6	26.00	3.10	35.0/7955	2.60	

\*Roller chain: d1 in the table indicate the external diameter of the roller

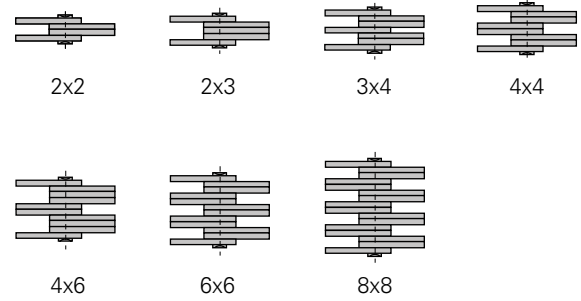


Stainless Steel Chains

Chain No.	Pitch	Roller Diameter	Width Between Inner Plates	Pin Diameter		Pin Length		Inner Plate Depth	Plate Thickness	Breaking Load	Weight Per Meter
	P	d1 max	b1 min	d2 max	d3 min	L max	Lc max	h2 max	T max	Q min	q
	mm	mm	mm	mm	mm	mm	mm	mm	mm	kN/LB	kg/m
C2042HPSS	25.40	15.88	7.85	5.63	4.00	16.5	17.6	12.0	1.50	7.7/1750	0.79
C2052HPSS	31.75	19.05	9.53	7.22	5.12	20.5	21.8	15.0	2.03	14.3/3250	1.27
C2062HPSS	38.10	22.23	12.70	8.31	6.00	25.8	26.8	17.0	2.42	16.8/3818	1.74
C2082HPSS	50.80	28.58	15.75	11.40	8.05	32.4	33.8	24.0	3.25	35.0/7955	2.86
C2042H-HPSS	25.40	15.88	7.85	5.63	4.00	18.8	19.9	12.0	2.03	7.7/1750	0.96
C2052H-HPSS	31.75	19.05	9.53	7.22	5.12	22.1	23.4	15.0	2.42	14.3/3250	1.46
C2062H-HPSS	38.10	22.23	12.70	8.31	6.00	29.2	30.2	17.0	3.25	16.8/3818	2.02
C2082H-HPSS	50.80	28.58	15.75	11.40	8.05	36.2	37.6	24.0	4.00	35.0/7955	3.30

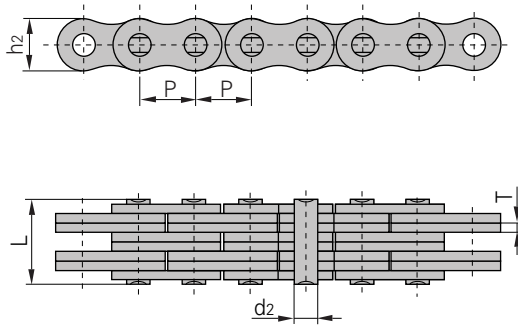


**Plate Lacing**

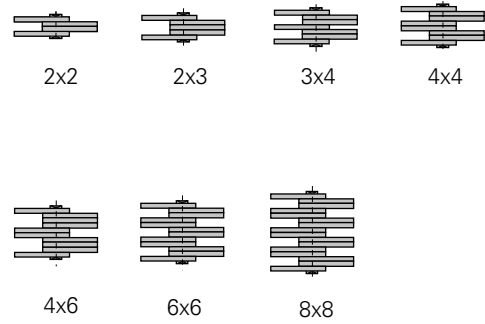


ANSI Chain No.	Pitch	Plate Lacing	Plate Depth	Plate Thickness	Pin Diameter	Pin Length	Ultimate Tensile Strength	Average Tensile Strength	Weight Per Meter
	P		h2 max	T max	d2 max	L max	Q min	Q0	q
	mm		mm	mm	mm	mm	kN/LB	kN	kg/m
BL422	12.7	2x2	12.07	2.08	5.09	11.05	22.2/5045	27.6	0.64
BL423		2x3				13.16	22.2/5045	27.6	0.80
BL434		3x4				17.40	33.4/7591	41.4	1.12
BL444		4x4				19.51	44.5/10114	56.0	1.28
BL446		4x6				23.75	44.5/10114	56.0	1.60
BL466		6x6				27.99	66.7/15159	81.7	1.92
BL488		8x8				36.45	89.0/20227	109.4	2.56
BL522	15.875	2x2	15.09	2.44	5.96	12.90	33.4/7591	43.1	0.88
BL523		2x3				15.37	33.4/7591	43.1	1.10
BL534		3x4				20.32	48.9/11114	65.6	1.50
BL544		4x4				22.78	66.7/15159	84.5	1.80
BL546		4x6				27.74	66.7/15159	84.5	2.20
BL566		6x6				32.69	100.1/22750	125.1	2.65
BL588		8x8				42.57	133.4/30318	169.5	3.50
BL622	19.05	2x2	18.11	3.30	7.94	17.37	48.9/11114	63.6	1.45
BL623		2x3				20.73	48.9/11114	63.6	1.80
BL634		3x4				27.43	75.6/17181	102.8	2.50
BL644		4x4				30.78	97.9/22250	120.9	2.90
BL646		4x6				37.49	97.9/22250	120.9	3.60
BL666		6x6				44.20	146.8/33364	190.8	4.30
BL688		8x8				57.61	195.7/44477	238.8	5.80
BL822	25.4	2x2	24.13	4.09	9.54	21.34	84.5/19204	108.2	2.20
BL823		2x3				25.48	84.5/19204	108.2	2.70
BL834		3x4				33.76	129.0/29318	170.0	3.80
BL844		4x4				37.90	169.0/38409	214.6	4.30
BL846		4x6				46.18	169.0/38409	214.6	5.40
BL866		6x6				54.46	253.6/57636	324.5	6.50
BL888		8x8				71.02	338.1/76841	432.7	8.60

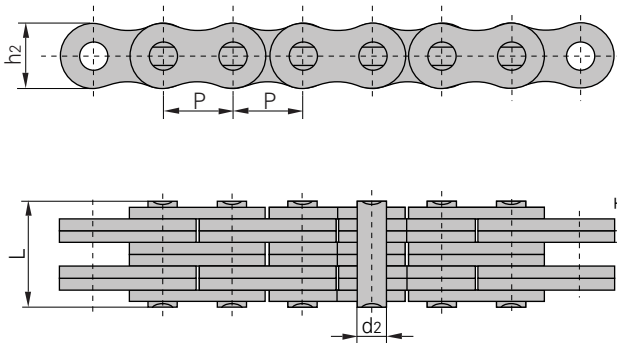
Hoisting Chains



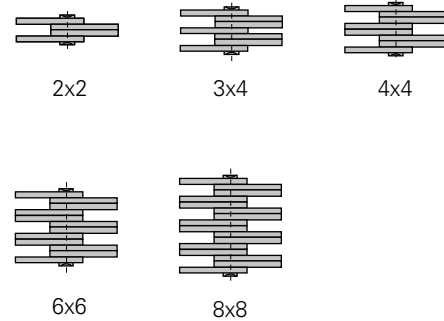
### Plate Lacing



ANSI Chain No.	Pitch	Plate Lacing	Plate Depth	Plate Thickness	Pin Diameter	Pin Length	Ultimate Tensile Strength	Average Tensile Strength	Weight Per Meter
	P		h2 max	T max	d2 max	L max	Q min	Q0	q
	mm		mm	mm	mm	mm	kN/LB	kN	kg/m
BL1022	31.75	2x2	30.18	4.9	11.11	25.37	115.6/26272	150.8	3.40
BL1023		2x3				30.33	115.6/26272	150.8	4.30
BL1034		3x4				40.23	182.4/41454	231.6	6.00
BL1044		4x4				45.19	231.3/52568	291.4	6.90
BL1046		4x6				55.09	231.3/52568	291.4	8.60
BL1066		6x6				65.00	347.0/78863	430.3	10.30
BL1088		8x8				84.81	462.6/105136	555.1	13.80
BL1222		2x2				38.1	36.20	5.77	12.71
BL1223	2x3	35.43	151.2/34363	192.0	5.8				
BL1234	3x4	47.07	244.6/55591	315.9	8.1				
BL1244	4x4	52.88	302.5/68750	381.1	9.3				
BL1246	4x6	64.52	302.5/68750	381.1	11.6				
BL1266	6x6	76.15	453.7/103113	543.6	13.9				
BL1288	8x8	99.42	605.0/137500	726.0	18.6				
BL1422	2x2	44.45	42.24	6.55	14.29				
BL1423	2x3					40.16	191.3/43477	225.7	7.6
BL1434	3x4					53.37	315.8/71772	372.6	10.6
BL1444	4x4					59.97	382.6/86954	451.2	12.2
BL1446	4x6					73.18	382.6/86954	451.2	15.2
BL1466	6x6					86.39	578.3/131431	682.4	18.2
BL1488	8x8					112.8	765.1/173886	902.8	24.3
BL1622	2x2					50.8	48.26	7.52	17.46
BL1623	2x3	46.58	289.1/65704	341.1	10.0				
BL1634	3x4	61.72	440.4/100091	519.6	14.0				
BL1644	4x4	69.29	573.8/131431	680.4	16.0				
BL1646	4x6	84.43	578.3/131431	680.4	20.0				
BL1666	6x6	99.57	857.4/194863	1000.7	24.0				
BL1688	8x8	129.84	1156.5/262841	1364.6	32.0				
BL2022	2x2	63.5	60.33	9.91	23.81				
BL2023	2x3					61.70	433.7/98568	511.7	19.8
BL2034	3x4					81.61	649.4/147590	766.2	27.7
BL2044	4x4					91.57	867.4/197163	1023.5	31.6
BL2046	4x6					111.48	867.4/197163	1023.5	39.5
BL2066	6x6					131.39	1301.1/295704	1535.2	47.4
BL2088	8x8					171.22	1734.8/354272	2046.5	63.2

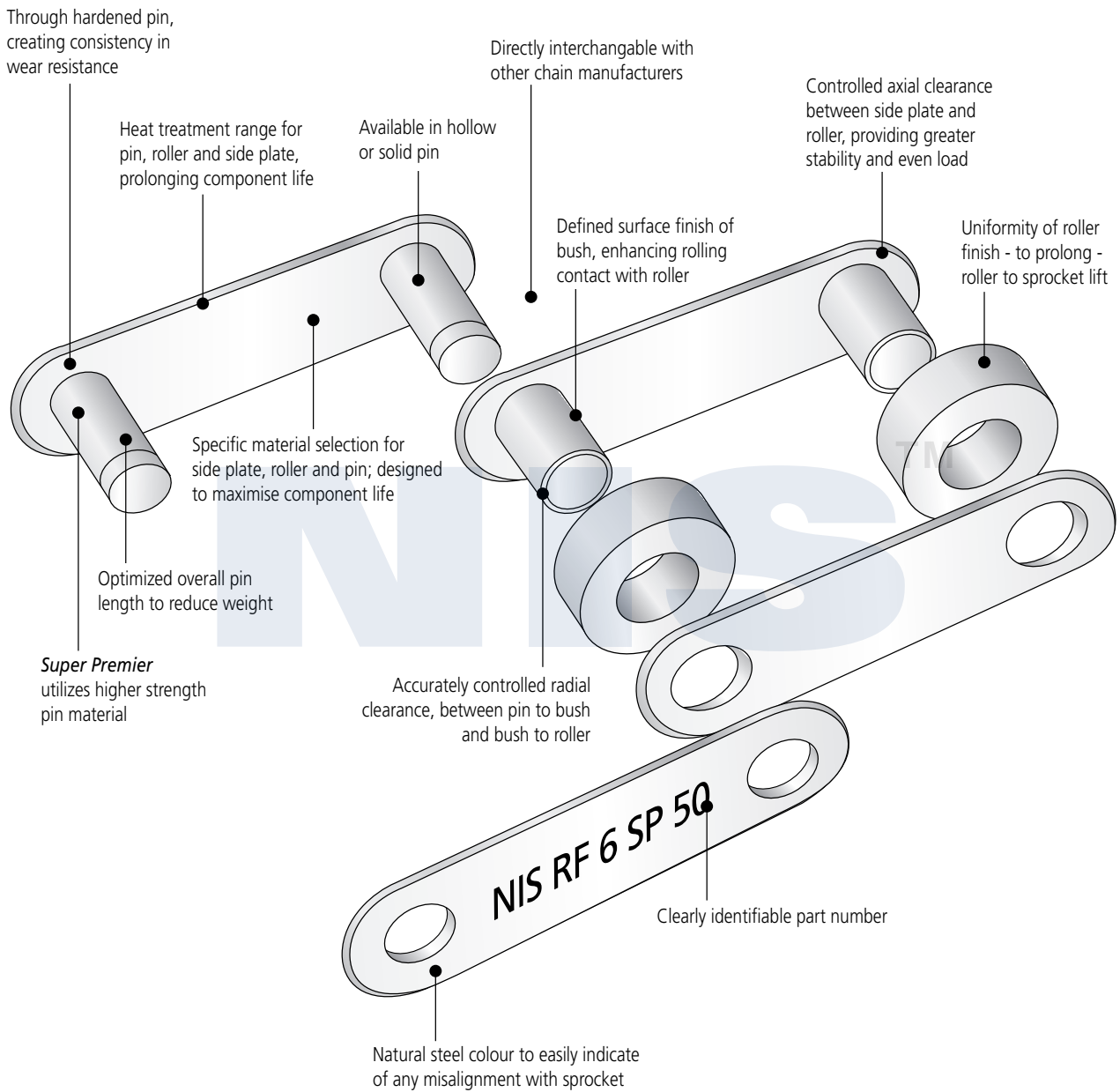


**Plate Lacing**

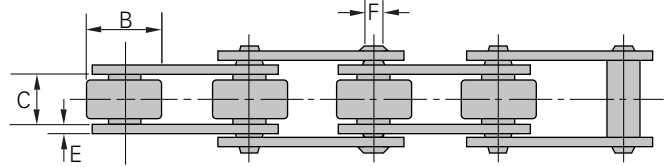
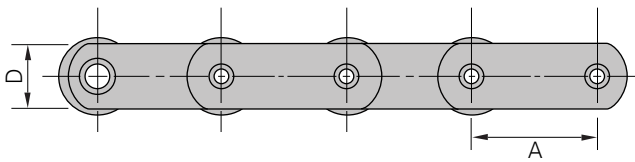


ANSI Chain No.	Pitch	Plate Lacing	Plate Depth	Plate Thickness	Pin Diameter	Pin Length	Ultimate Tensile Strength	Average Tensile Strength	Weight Per Meter
	P		h2 max	T max	d2 max	L max	Q min	Q0	q
	mm		mm	mm	mm	mm	kN/LB	kN	kg/m
AL322	9.525	2x2	7.7	1.3	3.58	6.8	9.0/2045	10.2	0.23
AL344		4x4				11.6	18.0/4090	20.0	0.46
AL422	12.7	2x2	10.4	1.5	3.96	8.3	14.1/3205	16.9	0.39
AL444		4x4				14.4	28.2/6409	35.2	0.74
AL466		6x6				20.5	42.3/9614	52.7	1.13
AL522	15.875	2x2	12.8	2.03	5.08	11.05	22.0/5000	27.5	0.64
AL534		3x4				17.0	33.0/7500	46.0	1.10
AL544		4x4				19.4	44.0/10000	55.0	1.25
AL566		6x6				27.5	66.0/15000	82.5	1.79
AL622	19.05	2x2	15.6	2.42	5.94	13.0	37.0/8409	44.4	0.86
AL644		4x4				22.7	63.7/14450	78.8	1.76
AL666		6x6				32.2	100.1/22750	118.6	2.60
AL688		8x8				42.2	133.4/30317	156.6	3.49
AL822	25.4	2x2	20.5	3.25	7.92	16.0	56.7/12886	68.6	1.54
AL844		4x4				29.4	113.4/25773	135.6	3.00
AL866		6x6				44.2	170.0/38636	202.3	4.46
AL1022	31.75	2x2	25.6	4.0	9.53	19.6	88.5/20114	107.1	2.37
AL1044		4x4				36.4	177.0/40227	203.6	4.68
AL1066		6x6				52.3	265.0/60227	315.3	7.20
AL1088		8x8				68.5	354.0/80454	421.2	9.94
AL1222	38.1	2x2	30.5	4.8	11.10	24.3	127.0/28864	151.1	3.65
AL1244		4x4				43.8	254.0/57727	299.7	7.05
AL1266		6x6				63.2	381.0/86591	426.3	10.50
AL1288		8x8				82.6	508.0/11545	568.4	14.03
AL1444	44.45	4x4	36.4	5.6	12.64	51.3	372.7/84705	413.6	10.34
AL1466		6x6				74.56	559.0/127045	620.4	15.16
AL1644	50.8	4x4	41.6	6.4	14.21	58.0	471.0/107045	522.8	12.98
AL1666		6x6				83.8	706.0/160454	783.6	19.76
AL1688		8x8				109.5	942.0/214090	1045.5	25.47

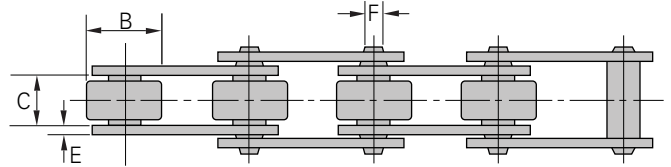
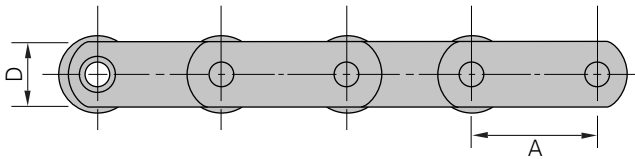
Enhancements That Put NIS™ Products Above The Rest...



**Hollow Pins**



**Solid Pins**



**Premier Type**

NIS Chain No.	Pitch		Breaking Load		Roller Diameter		Inside Width		Plate Depth		Plate Thickness		Pin Diameter	
	inch	mm	lbf	Newtons	inch	mm	inch	mm	inch	mm	inch	mm	inch	mm
	A	A			B	B	C	C	D	D	E	E	F	F
RF-4-SP-18-NIS	4.0	101.6	18,000	80,280	1.875	47.6	0.75	19.0	1.50	38.1	0.20	5.00	0.75	19.05
RF-4-SP-26-NIS	4.0	101.6	26,000	116,000	1.875	47.6	0.75	19.0	1.50	38.1	0.20	5.00	0.75	19.05
RF-6-SP-50-NIS	6.0	152.4	50,000	222,000	2.625	66.7	1.00	25.4	2.00	50.8	0.25	6.30	1.06	27.0
RF-4-HP-17-NIS	4.0	101.6	17,000	76,000	1.875	47.6	0.75	19.0	1.50	38.1	0.20	5.00	0.52	13.2
RF-6-HP-36-NIS	6.0	152.4	36,000	160,000	2.625	66.7	1.00	25.4	2.00	50.8	0.25	6.30	0.79	20.1

**Super Premier Type**

NIS Chain No.	Pitch		Breaking Load		Roller Diameter		Inside Width		Plate Depth		Plate Thickness		Pin Diameter	
	inch	mm	lbf	Newtons	inch	mm	inch	mm	inch	mm	inch	mm	inch	mm
	A	A			B	B	C	C	D	D	E	E	F	F
RF-T4-SP-25-NIS	4.0	101.6	25,000	113,363	1.87	47.6	0.84	21.4	1.25	31.8	0.19	4.80	0.45	11.32
RF-T4-SP-42-NIS	4.0	101.6	42,000	187,089	2.00	50.8	1.18	30.0	1.50	38.1	0.25	6.30	0.57	14.50
RF-T6-SP-42-NIS	6.0	152.4	42,000	187,089	2.00	50.8	1.18	30.0	1.50	38.1	0.25	6.30	0.57	14.50



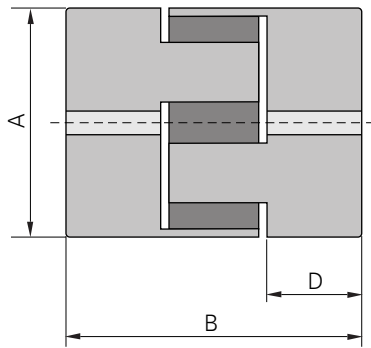


## Couplings & Bushes

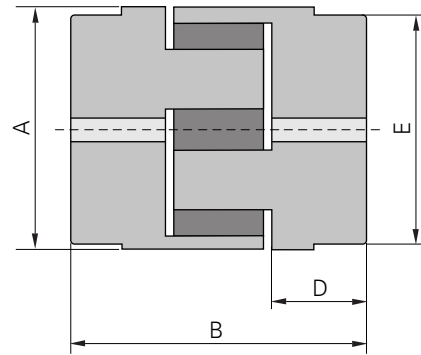
---

	Page
Couplings	45
Bushes	51

---



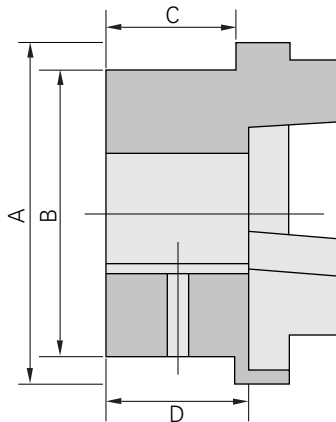
TYPE 1



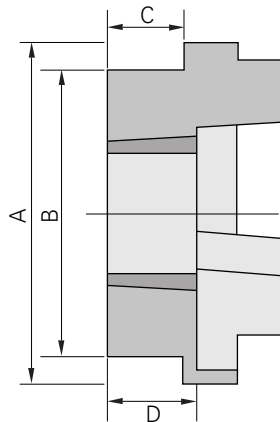
TYPE 2

## Specifications

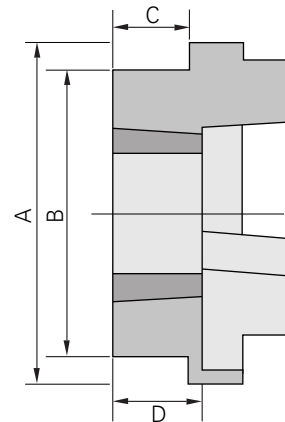
Size	Type	Torque Rating (Nm)	A	B	D	E	Std Bore	Bore Metric		Bore Inch	
								Min	Max	Min	Max
L035	1	0.60	16	20.5	6.6	-	3	3	8	1/8	3/8
L050	1	3.51	28	43.2	15.6	-	6	6	15	3/16	5/8
L070	1	5.77	35	50.8	19.0	-	9	9	19	3/16	3/4
L075	1	11.90	45	54.7	21	-	9	9	25	3/16	1
L090	1	19.20	54	54.7	21	-	9	9	28	3/16	1 1/8
L095	1	25.80	54	63.7	25.5	-	9	9	28	3/8	1 1/8
L099	1	40.00	64.5	72.5	27	-	12	12	35	7/16	1 3/8
L100	1	55.40	64.5	88.5	35	-	12	12	35	7/16	1 3/8
L110	1	105.00	85	108	43	-	15	15	48	1/2	1 7/8
L150	1	150.00	96	115.4	45	-	15	15	48	5/8	1 7/8
L190	2	200.00	115	133.4	54	101.6	19	19	55	5/8	2 1/4
L225	2	280.00	127	153.4	64	108	19	19	65	3/4	2 5/8



B Flange



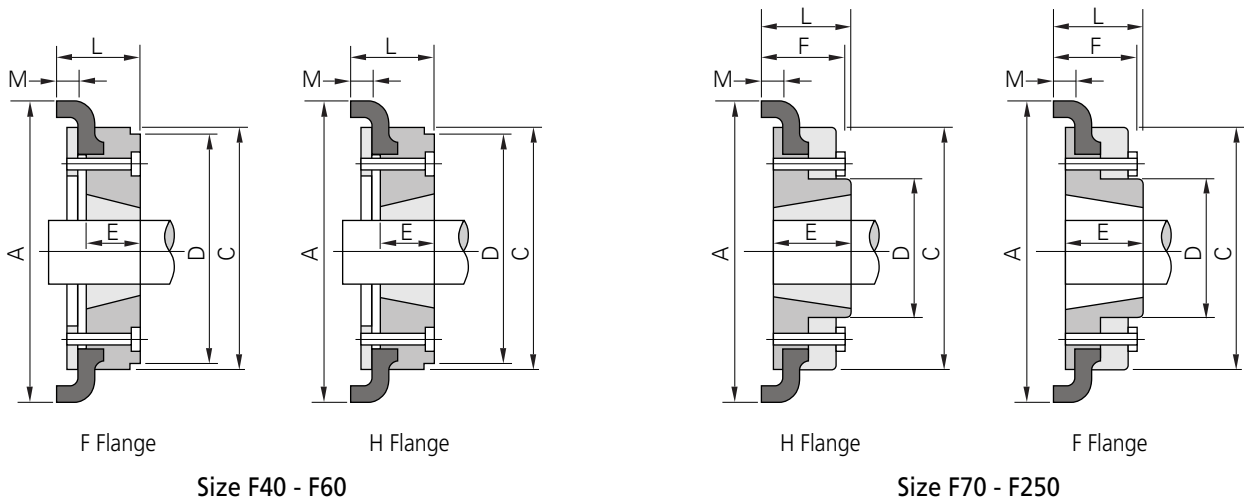
F Flange



H Flange

**Specifications**

Size	Torque Rating (Nm)	Type F & H						Type B				A	B	E	F	G	L1	L2	L3	J*
		Bush	Bore		C	D	Bore		C	D										
			Max	Min			Max	Min												
70	31.50	1008	25	9	20.0	23.5	32	10	20	23.5	69	60	31	25	18	65	66.5	68	29	
90	80.00	1108	28	9	19.5	23.5	42	10	26	30.5	85	65	32	30.5	22.5	69.5	76	82.5	29	
110	160.00	1610	42	14	18.5	26.5	55	10	37	45.5	112	100	45	45	29	82	101	119	38	
130	315.00	1610	42	14	18.0	26.5	60	20	39	47.5	130	105	50	53	36	89	118	146	38	
150	600.00	2012	50	14	23.5	33.5	65	28	46	56.0	150	115	62	60	40	107	134	160	42	
180	950.00	2517	60	16	34.5	46.5	80	28	58	70.0	180	125	77	73	49	142	166	189	48	
230	2,000.00	3020	75	25	39.5	52.5	100	48	77	90.0	225	155	99	85.5	59.5	165	202	240	55	
280	3,150.00	3525	100	35	51.0	66.5	115	60	90	105.5	275	206	119	105.5	74.5	208	247	286	67	



## Specifications

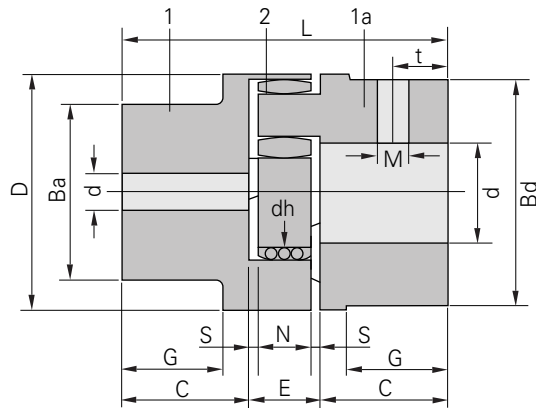
Size	Type	Bush No.	Max. Bore		Type F & H		Type B		Scew Over Key	A	C	D	F	M
			mm	inch	L	E	L	E						
F40	B	-	32	-	-	-	33	22	M5	104	82	-	-	11
	F	1008	25	1	33	22	-	-	-	104	82	-	-	11
	H	1008	25	1	33	22	-	-	-	104	82	-	-	11
F50	B	-	38	-	-	-	45	32	M5	133	100	79	-	12.5
	F	1210	32	1 <sup>1</sup> / <sub>4</sub>	38	25	-	-	-	133	100	79	-	12.5
	H	1210	32	1 <sup>1</sup> / <sub>4</sub>	38	25	-	-	-	133	100	79	-	12.5
F60	B	-	45	-	-	-	55	38	M6	165	125	70	-	16.5
	F	1610	42	1 <sup>5</sup> / <sub>8</sub>	42	25	-	-	-	165	125	103	-	16.5
	H	1610	42	1 <sup>5</sup> / <sub>8</sub>	42	25	-	-	-	165	125	103	-	16.5
F70	B	-	50	-	-	-	47	35	M8	187	142	80	50	11.5
	F	2012	50	2	44	32	-	-	-	187	142	80	50	11.5
	H	1610	42	1 <sup>5</sup> / <sub>8</sub>	42	25	-	-	-	187	142	80	50	11.5
F80	B	-	60	-	-	-	55	42	M8	211	165	98	54	12.5
	F	2517	60	2 <sup>1</sup> / <sub>2</sub>	58	45	-	-	-	211	165	98	54	12.5
	H	2012	50	2	45	32	-	-	-	211	165	98	54	12.5
F90	B	-	70	-	-	-	63.5	49	M10	235	188	108	60	13.5
	F	2517	60	2 <sup>1</sup> / <sub>2</sub>	58.5	45	-	-	-	235	188	108	60	13.5
	H	2517	60	2 <sup>1</sup> / <sub>2</sub>	58.5	45	-	-	-	235	188	108	60	13.5
F100	B	-	80	-	-	-	70.5	56	M10	254	216	120	62	13.5
	F	3020	75	3	64.5	51	-	-	-	254	216	125	62	13.5
	H	2517	60	2 <sup>1</sup> / <sub>2</sub>	58.5	45	-	-	-	254	216	113	62	13.5
F110	B	-	90	-	-	-	75.5	63	M12	279	233	128	62	12.5
	F	3020	75	3	63.5	51	-	-	-	279	233	134	62	12.5
	H	3020	75	3	63.5	51	-	-	-	279	233	134	62	12.5
F120	B	-	100	-	-	-	84.5	70	M12	314	264	140	67	14.5
	F	3525	100	4	79.5	65	-	-	-	314	264	144	67	14.5
	H	3020	75	3	65.5	51	-	-	-	314	264	144	67	14.5
F140	B	-	130	-	-	-	110.5	94	M16	359	311	178	73	16
	F	3525	100	4	81.5	65	-	-	-	359	311	178	73	16
	H	3523	100	4	81.5	65	-	-	-	359	311	178	73	16
F160	B	-	140	-	-	-	117	102	M20	402	345	187	78	15
	F	4030	115	4 <sup>1</sup> / <sub>2</sub>	92	77	-	-	-	402	345	197	78	15
	H	4030	115	4 <sup>1</sup> / <sub>2</sub>	92	77	-	-	-	402	345	197	78	15
F180	B	-	150	-	-	-	137	114	M16	470	394	205	94	23
	F	4535	125	5	112	89	-	-	-	470	394	205	94	23
	H	4535	125	5	112	89	-	-	-	470	394	205	94	23

**Specifications**

Size	Type	Bush No.	Max. Bore		Type F & H		Type B		Screw Over Key	A	C	D	F	M
			mm	inch	L	E	L	E						
F200	B	-	150	-	-	-	138	114	M20	508	429	205	103	24
	F	4535	125	5	113	89	-	-	-	508	429	205	103	24
	H	4535	125	5	113	89	-	-	-	508	429	205	103	24
F220	B	-	160	-	-	-	154.5	127	M20	562	474	223	118	27.5
	F	5040	125	5	129.5	102	-	-	-	562	474	223	118	27.5
	H	5040	125	5	129.5	102	-	-	-	562	474	223	118	27.5
F250	B	-	190	-	-	-	161.5	132	M20	628	532	254	125	29.5

**Power Ratings (KW)**

Speed rev/min	Size Coupling															
	F40	F50	F60	F70	F80	F90	F100	F110	F120	F140	F160	F180	F200	F220	F250	
100	0.25	0.69	1.33	2.62	3.93	5.24	7.07	9.16	13.9	24.3	39.5	65.7	97.6	121	154	
200	0.50	1.38	2.66	5.24	7.85	10.5	14.1	18.3	27.9	48.7	79.0	131	195	243	307	
300	0.75	2.07	3.99	7.85	11.8	15.7	21.2	27.5	41.8	73.0	118	197	293	364	461	
400	1.01	2.76	5.32	10.5	15.7	20.9	28.3	36.6	55.7	97.4	158	263	391	486	615	
500	1.26	3.46	6.65	13.1	19.6	26.2	35.3	45.8	69.6	122	197	328	488	607	768	
600	1.51	4.15	7.98	15.7	23.6	31.4	42.4	55.0	83.6	146	237	394	586	729	922	
700	1.76	4.84	9.31	18.3	27.5	36.6	49.5	64.1	97.5	170	276	460	684	850	1076	
720	1.81	4.98	9.57	18.8	28.3	37.7	50.9	66.0	100	175	284	473	703	875	1106	
800	2.01	5.53	10.6	20.9	31.4	41.9	56.5	73.3	111	195	316	525	781	972	1229	
900	2.26	6.22	12.0	23.6	35.3	47.1	63.6	82.5	125	219	355	591	879	1093	1383	
960	2.41	6.63	12.8	25.1	37.7	50.3	67.9	88.0	134	234	379	630	937	1166	1475	
1000	2.51	6.91	13.3	26.2	39.3	52.4	70.7	91.6	139	243	395	657	976	1215	1537	
1200	3.02	8.29	16.0	31.4	47.1	62.8	84.8	110	167	292	474	788	1172	-	-	
1400	3.52	9.68	18.6	36.6	55.0	73.3	99.0	128	195	341	553	919	-	-	-	
1440	3.62	9.95	19.1	37.7	56.5	75.4	102	132	201	351	568	945	-	-	-	
1600	4.02	11.1	21.3	41.9	62.8	83.8	113	147	223	390	632	-	-	-	-	
1800	4.52	12.4	23.9	47.1	70.7	94.2	127	165	251	438	-	-	-	-	-	
2000	5.03	13.8	26.6	52.4	78.5	105.5	141	183	279	-	-	-	-	-	-	
2200	5.53	15.2	29.3	57.6	86.4	115	155	202	-	-	-	-	-	-	-	
2400	6.03	16.6	31.9	62.8	94.2	126	170	-	-	-	-	-	-	-	-	
2600	6.53	18.0	34.6	68.1	102	136	184	-	-	-	-	-	-	-	-	
2800	7.04	19.4	37.2	73.3	110	147	-	-	-	-	-	-	-	-	-	
2880	7.24	19.9	38.3	75.4	113	151	-	-	-	-	-	-	-	-	-	
3000	7.54	20.7	39.9	78.5	118	157	-	-	-	-	-	-	-	-	-	
3600	9.05	24.9	47.9	94.2	-	-	-	-	-	-	-	-	-	-	-	
Nominal Torque (Nm)	24	66	127	250	375	500	675	875	1330	2325	3770	6270	9325	11600	14675	
Max Torque (Nm)	64	160	318	487	759	1096	1517	2137	3547	5642	9339	16455	23508	33125	42740	

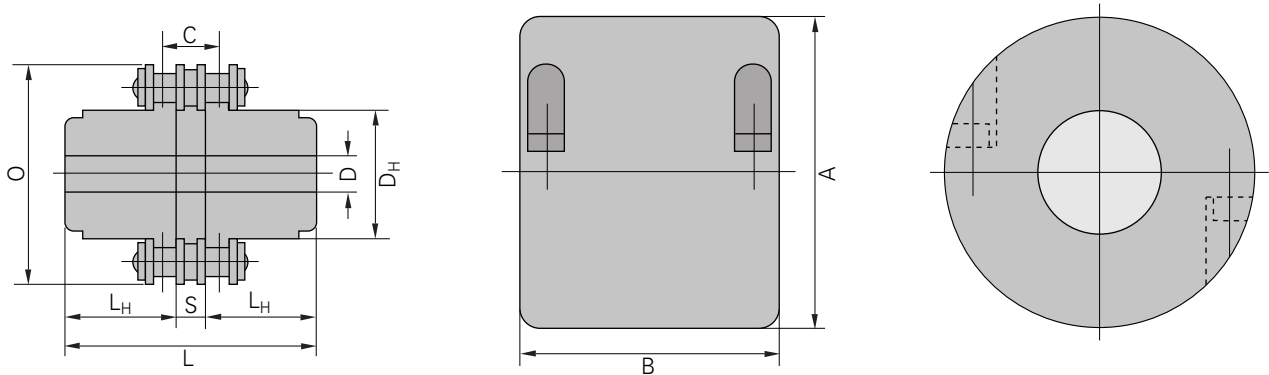


Aluminium

Size	Component	Spider (Part 2) Rated Torque (Nm)			Std Bore	Finish Bore	L	C	E	N	S	D	dh	Ba; Bd	G	Finish Bore	
		92 Sh A	98 Sh A	64 Sh D	(d)	(d)min-max										M	t
19/24	1	10	17	-	6	6-19	66	25	16	12	2	41	18	32/41	20/-	M5	10
	1a				6	6-24											
24/32	1	35	60	-	9	9-24	78	30	18	14	2	56	27	40/56	24/-	M5	10
	1a				24	9-32											
28/38	1	95	160	-	10	10-28	90	35	20	15	2.5	67	30	48/67	28/-	M5	15
	1a				28	10-38											
38/45	1	190	325	-	12	12-38	114	45	24	18	3	80	38	66/78	37	M5	15
	1a				38	12-45											

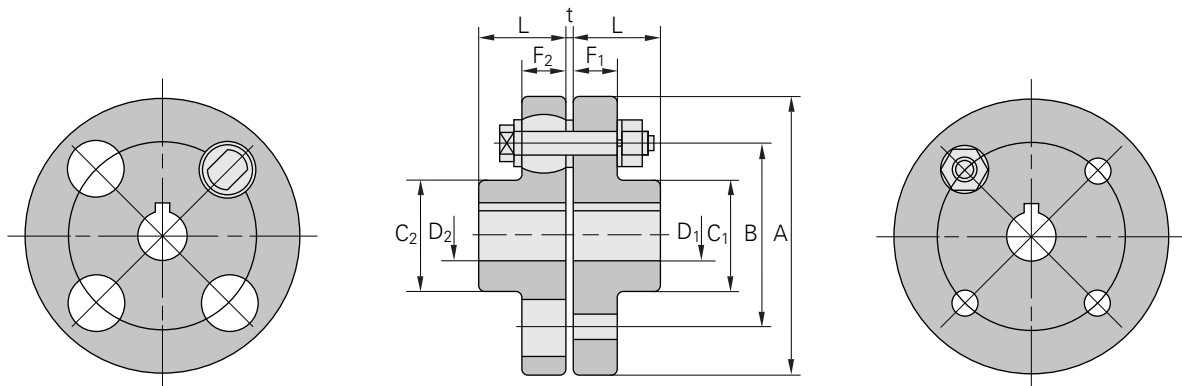
Cast Iron

Size	Component	Spider (Part 2) Rated Torque (Nm)			Std Bore	Finish Bore	L	C	E	N	S	D	dh	Ba; Bd	G	Finish Bore	
		92 Sh A	98 Sh A	64 Sh D	(d)	(d)min-max										M	t
19/24	1	10	17	21	6	6-19	66	25	16	12	2	40	18	32/41	20/-	M5	10
	1a				6	6-24											
24/32	1	35	60	75	9	9-24	78	30	18	14	2	55	27	40/56	24/-	M5	10
	1a				9	9-32											
28/38	1	95	160	200	10	10-28	90	35	20	15	2.5	65	30	48/67	28/-	M8	15
	1a				10	10-38											
38/45	1	190	325	405	12	12-38	114	45	24	18	3	80	38	66/78	37	M8	15
	1a				12	12-45											
42/55	1	265	450	560	12	12-42	126	50	26	20	3	95	46	75/94	40	M8	20
	1a				12	12-55											
48/60	1	310	525	655	12	12-48	140	56	28	21	3.5	105	51	85/104	45	M8	20
	1a				12	12-60											
55/70	1	410	685	825	15	15-55	160	65	30	22	4	120	60	98/118	52	M10	20
	1a				15	15-70											
65/75	1	625	940	1175	15	15-65	185	75	35	26	4.5	135	68	115/133	61	M10	20
	1a				15	15-75											
75/90	1	1280	1920	2400	15	15-75	210	85	40	30	5	160	80	135/158	69	M10	25
	1a				15	15-90											
90/100	1	2400	3600	4500	38	38-90	245	100	45	34	5.5	200	100	160/180	81	M12	25
	1a				38	38-100											



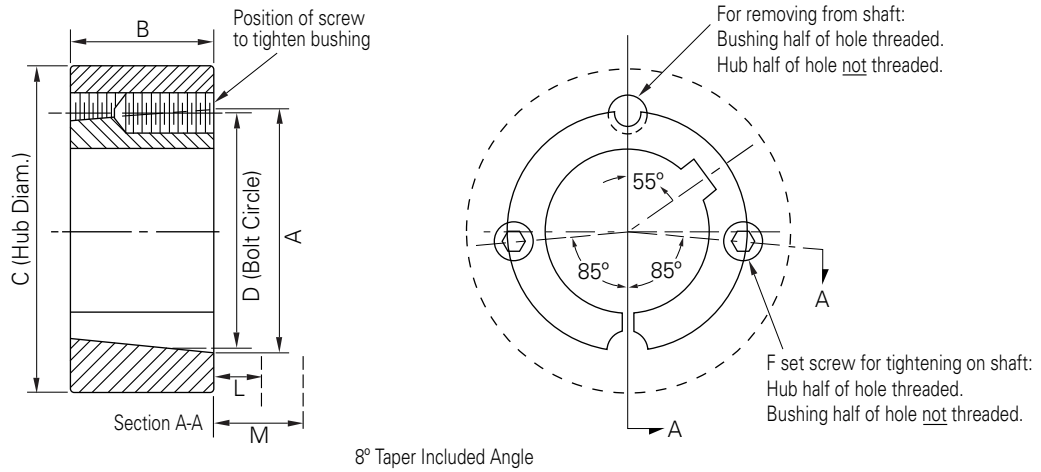
**Dimensions**

Coupling Number	Chain Pitch	Coupling									Casing			
		Drill Hole	Shaft $\phi$		O	L	D <sub>H</sub>	L <sub>H</sub>	S	C	Approx. Weight (kg)	A	B	Approx. Weight (kg)
			Min.	Max.										
3012	9.525	12	13.5	16	45	65	27.2	29.5	6.0	10.1	0.31	69	63	0.22
4012	12.70	12	14	22	62	79.4	36	36	7.4	14.4	0.73	77	72	0.30
4014	12.70	12	14	28	69	79.4	45	36	7.4	14.4	1.12	84	75	0.31
4016	12.70	13.5	16	32	77	87.4	51.5	40	7.4	14.4	1.50	92	72	0.35
5014	15.875	14.5	17	35	86	99.7	56	45	9.7	18.1	2.15	101	85	0.47
5016	15.875	14.5	18	40	96	99.7	64	45	9.7	18.1	2.75	110	87	0.50
5018	15.875	16	18	45	106	99.7	73.5	45	9.7	18.1	3.60	122	85	0.60
6018	19.05	20	22	56	127	123.5	89.5	56	11.5	22.8	6.55	147	105	1.2
6020	19.05	20	24	60	139	123.5	102.5	56	11.5	22.8	8.38	158	105	1.2
6022	19.05	20	28	71	151	123.5	115	56	11.5	22.8	10.4	168	117	1.2
8018	25.4	20	32	80	169	141.2	115	63	15.2	29.3	13.2	190	129	1.9
8020	25.4	20	36	90	185	145.2	125	65	15.2	29.3	16.2	210	137	2.5
8022	25.4	20	40	100	202	157.2	142	71	15.2	29.3	21.8	226	137	2.7
10020	31.75	25	45	110	233	178.8	162	80	18.8	35.8	32.4	281	153	4.1
12018	38.10	35	50	125	256	202.7	173	90	22.7	45.4	43.2	307	181	5.2
12022	38.10	35	56	140	304	222.7	213	100	22.7	45.4	69.1	357	181	6.7



Specifications

Torque Rating (Nm)	Item P/N (metric)	Item P/N (inch)	øA	øL	øB	C1	C2	F1	F2	Bush	Bush Qty	Maximum Bore (D1)	Maximum Bore (D2)
8	FCL-76	3	76	27	52	-	-	17.0	17.0	F0	3	15	15
15	FCL-90	3½	90	28	60	35.5	35.5	17.0	17.0	F1	4	20	20
29	FCL-100	4	100	35.5	67	42.5	42.5	19.0	19.0	F2	4	25	25
33	FCL-112	4½	112	40	75	50	50	19.0	19.0	F2	4	28	28
73	FCL-125	5	125	45	85	56	50	21.0	21.0	F3	4	32	28
100	FCL-130	5⅛	130	45	90	-	-	21.0	21.0	F3	4	32	30
130	FCL-140	5½	140	50	100	71	63	21.0	21.0	F3	6	38	35
160	FCL-150	6	150	55	110	-	-	21.0	21.0	F3	8	40	40
200	FCL-160	6⅝	160	56	115	80	80	21.0	21.0	F3	8	45	45
215	FCL-165	6½	165	60	121	-	-	21.0	21.0	F3	8	45	45
230	FCL-180	7	180	63	132	90	90	21.0	21.0	F3	8	50	50
440	FCL-200	8	200	71	145	100	100	26.4	26.4	F4	8	56	56
510	FCL-224	9	224	80	170	112	112	26.4	26.4	F4	8	63	63
650	FCL-235	9¼	235	85	175	-	-	26.4	26.4	F4	8	65	65
850	FCL-250	10	250	90	180	125	125	32.0	32.0	F5	8	71	71
1500	FCL-280	11	280	100	200	140	140	32.0	44.0	F6	8	80	80
1800	FCL-300	12	300	110	225	-	-	32.0	44.0	F6	8	85	85
2200	FCL-315	12½	315	112	236	160	160	32.0	44.0	F6	10	90	90
3500	FCL-355	14	355	125	260	180	180	40.5	61.0	F7	8	100	100
4000	FCL-380	15	380	125	278	-	-	40.5	61.0	F7	10	105	105
5000	FCL-400	15¾	400	125	300	200	200	40.5	61.0	F7	10	110	110
5600	FCL-420	16½	420	130	320	-	-	40.5	61.0	F7	10	115	115
6000	FCL-430	17	430	132	330	-	-	40.5	61.0	F7	12	120	120
7100	FCL-450	18	450	140	355	224	224	40.5	61.0	F7	12	125	125



**Taper Bush 1008-3030**

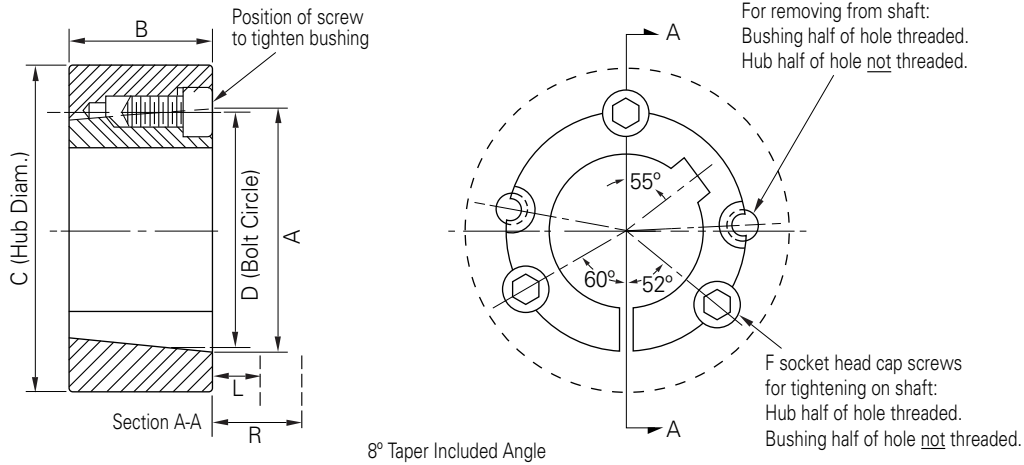
Bushing Number	A	B	C			D	F (in)	L		M	
			Class 20 Gray Iron	Class 30 Gray Iron	Steel			Standard Hex. Key	Standard Short Key	Hex. Key	Short Key
1008	35.2	22.2	60.3	55.6	49.2	33.7	1/4" x 1/2"	28.6	15.9	31.8	44.5
1108	38.4	22.2	63.5	58.7	52.4	36.9	1/4" x 1/2"	28.6	15.9	31.8	44.5
1210	47.6	25.4	92.1	82.6	73.0	44.5	3/8" x 5/8"	34.9	20.6	41.3	27.0
1215	47.6	38.1	79.4	73.0	66.7	44.5	3/8" x 5/8"	34.9	20.6	41.3	27.0
1310	50.8	25.4	95.3	85.7	76.2	47.6	3/8" x 5/8"	34.9	20.6	41.3	27.0
1610	57.2	25.4	101.6	101.6	82.6	54.0	3/8" x 5/8"	34.9	20.6	41.3	27.0
1615	57.2	38.1	88.9	82.6	76.2	54.0	3/8" x 5/8"	34.9	20.6	41.3	27.0
2012	69.9	31.8	120.7	116.8	98.4	66.7	7/16" x 7/8"	39.7	23.8	50.8	34.9
2517	85.7	44.5	139.7	123.8	111.1	82.6	1/2" x 1"	41.3	25.4	57.2	41.3
2525	85.7	63.5	120.7	114.3	108.0	82.6	1/2" x 1"	41.3	25.4	57.2	41.3
3020	108.0	50.8	177.8	158.8	142.9	101.6	5/8" x 1 1/4"	46.0	30.2	68.3	52.4
3030	108.0	76.2	158.8	146.1	136.5	101.6	5/8" x 1 1/4"	46.0	30.2	68.3	52.4

## Metric Bores and Keyways

Bore Dia. (mm)	Keyway		Shallow Keyway Depth	Bore Sizes Available								
	Width (mm)	Depth (mm)		1008	1108	1210	1610	1615	2012	2517	3020	3030
9	3	1.4	–	•	•							
10	3	1.4	–	•	•							
11	4	1.8	–	•	•	•						
12	4	1.8	–	•	•	•						
14	5	2.3	–	•	•	•	•	•	•			
15	5	2.3	–	•	•	•	•	•	•			
16	5	2.3	–	•	•	•	•	•	•	•		
18	6	2.8	–	•	•	•	•	•	•	•		
19	6	2.8	–	•	•	•	•	•	•	•		
20	6	2.8	–	•	•	•	•	•	•	•		
22	6	2.8	–	•	•	•	•	•	•	•		
24	8	3.3	1.3	•	•	•	•	•	•	•		
25	8	3.3	1.3	•*	•	•	•	•	•	•	•	
28	8	3.3	1.3		•*	•	•	•	•	•	•	
30	8	3.3	–			•	•	•	•	•	•	
32	10	3.3	–			•	•	•	•	•	•	•
35	10	3.3	–				•	•	•	•	•	•
38	10	3.3	–				•	•	•	•	•	•
40	12	3.3	–				•	•	•	•	•	•
42	12	3.3	2.2				•	•*	•	•	•	•
45	14	3.8	–						•	•	•	•
48	14	3.8	–						•	•	•	•
50	14	3.8	–						•	•	•	•
55	16	4.3	–						•	•	•	•
60	18	4.4	–						•	•	•	•
65	18	4.4	–							•	•	•
70	20	4.9	–							•	•	•
75	20	4.9	–							•	•	•

## Inch Bores and Keyways

Bore Dia. (in.)	Keyway		Shallow Keyway Depth	Bore Sizes Available								
	Width (in.)	Depth (in.)		1008	1108	1210	1610	1615	2012	2517	3020	3030
0.375	0.125	0.06	–	•	•							
0.500	0.125	0.06	–	•	•		•	•				
0.625	0.187	0.09	–	•	•	•	•	•				
0.750	0.187	0.09	–	•	•	•	•	•	•	•		
0.875	0.250	0.12	–	•	•	•	•	•	•	•		
1.000	0.250	0.12	0.052	•*	•	•	•	•	•	•		
1.125	0.312	0.11	0.064		•*	•	•	•	•	•		
1.250	0.312	0.11	–			•	•	•	•	•	•	•
1.375	0.375	0.11	–				•	•	•	•	•	•
1.500	0.375	0.11	–				•	•	•	•	•	•
1.625	0.437	0.13	0.103				•	•*	•	•	•	•
1.750	0.437	0.13	–						•	•	•	•
1.875	0.500	0.13	–						•	•	•	•
2.000	0.500	0.13	–						•	•	•	•
2.125	0.625	0.18	–							•	•	•
2.250	0.625	0.18	–							•	•	•
2.375	0.625	0.18	–							•	•	•
2.500	0.625	0.18	–							•	•	•
2.625	0.750	0.21	–								•	•
2.750	0.750	0.21	–								•	•
2.875	0.750	0.21	–								•	•
3.000	0.750	0.21	–								•	•



**Taper Bush 3525-4040**

Bushing Number	Bore	Approx. Wgt. (Kg)	Bushing Keyseat	Shaft Keyseat	A	B	C			D	F (in)	G	R
							Class 20 Gray Iron	Class 30 Gray Iron	Steel				
3525	30 to 38	4.5	10 x 3.3	10 x 5.0	127	63.5	197	178	165	123	1/2" x 1 1/2"	39°	▲
	38 to 44	4.2	12 x 3.3	12 x 5.0									
	44 to 50	4.2	14 x 3.8	14 x 5.5									
	50 to 58	4.1	16 x 4.3	16 x 6.0									
	58 to 65	3.6	18 x 4.4	18 x 7.0									
	65 to 75	3.2	20 x 4.9	20 x 7.5									
	75 to 85	2.7	22 x 5.4	22 x 9.0									
	85 to 95	2.2	25 x 5.4	25 x 9.0									
95 to 100	2.1	28 x 4.4	28 x 10.0										
3535	30 to 38	6.4	10 x 3.3	10 x 5.0	127	89	197	178	165	123	1/2" x 1 1/2"	39°	▲
	38 to 44	6.2	12 x 3.3	12 x 5.0									
	44 to 50	5.9	14 x 3.8	14 x 5.5									
	50 to 58	5.4	16 x 4.3	16 x 6.0									
	58 to 65	5.0	18 x 4.4	18 x 7.0									
	65 to 75	4.5	20 x 4.9	20 x 7.5									
	75 to 85	4.0	22 x 5.4	22 x 9.0									
	85 to 95	3.6	25 x 5.4	25 x 9.0									
95 to 110	3.2	28 x 4.4	28 x 10.0										
4030	38 to 44	7.7	12 x 3.3	12 x 5.0	146	76.2	241	216	197	141	5/8" x 1 3/4"	40°	▲
	44 to 50	7.3	14 x 3.8	14 x 5.5									
	50 to 58	6.8	16 x 4.3	16 x 6.0									
	58 to 65	6.4	18 x 4.4	18 x 7.0									
	65 to 75	5.9	20 x 4.9	20 x 7.5									
	75 to 85	5.4	22 x 5.4	22 x 9.0									
	85 to 95	5.0	25 x 5.4	25 x 9.0									
	95 to 101	4.8	28 x 6.4	28 x 10.0									
111 to 115	4.5	28 x 5.4	32 x 11.0										
4040	38 to 44	10.0	12 x 3.3	12 x 5.0	146	102	241	216	197	141	5/8" x 1 3/4"	40°	▲
	44 to 50	9.5	14 x 3.8	14 x 5.5									
	50 to 58	9.0	16 x 4.3	16 x 6.0									
	58 to 65	8.6	18 x 4.4	18 x 7.0									
	65 to 75	8.2	20 x 4.9	20 x 7.5									
	75 to 85	7.7	22 x 5.4	22 x 9.0									
	85 to 95	6.8	25 x 5.4	25 x 9.0									
	95 to 110	6.4	28 x 4.4	28 x 10.0									
111 to 115	5.9	28 x 5.4	32 x 11.0										

▲ Provide sufficient space to tighten and loosen bushing. Width across flats of screw head is same as screw diameter which is shown in column F.

## Taper Bush 4535-5050

Bushing Number	Bore	Approx. Wgt. (Kg)	Bushing Keyseat	Shaft Keyseat	A	B	C			D	F (in)	G	R
							Class 20 Gray Iron	Class 30 Gray Iron	Steel				
4535	50 to 58	10.4	16 x 4.3	16 x 6.0	161	89	267	241	222	156	3/4" x 2"	40°	▲
	58 to 65	10.0	18 x 4.4	18 x 7.0									
	65 to 75	9.5	20 x 4.9	20 x 7.5									
	75 to 85	9.1	22 x 5.4	22 x 9.0									
	85 to 95	8.2	25 x 5.4	25 x 9.0									
	95 to 110	7.3	28 x 6.4	28 x 10.0									
4545	50 to 58	13.6	16 x 4.3	16 x 6.0	161	114	267	241	222	156	3/4" x 2"	40°	▲
	58 to 65	12.7	18 x 4.4	18 x 7.0									
	65 to 75	12.2	20 x 4.9	20 x 7.5									
	75 to 85	11.8	22 x 5.4	22 x 9.0									
	85 to 95	10.4	25 x 5.4	25 x 9.0									
	95 to 110	9.1	28 x 6.4	28 x 10.0									
5040	65 to 75	13.1	20 x 4.9	20 x 7.5	178	101.6	292	267	241	171	7/8" x 2 1/4"	37°	▲
	75 to 85	12.7	22 x 5.4	22 x 9.0									
	85 to 95	11.8	25 x 5.4	25 x 9.0									
	95 to 110	10.9	28 x 6.4	28 x 10.0									
	110 to 130	10.0	32 x 7.4	32 x 11.0									
	130 to 140	8.9	36 x 6.4	36 x 12.0									
5050	65 to 75	17.2	20 x 4.9	20 x 7.5	178	127	292	267	241	171	7/8" x 2 1/4"	37°	▲
	75 to 85	15.9	22 x 5.4	22 x 9.0									
	85 to 95	14.5	25 x 5.4	25 x 9.0									
	95 to 110	12.2	28 x 6.4	28 x 10.0									
	110 to 130	10.9	32 x 7.4	32 x 11.0									
	130 to 140	10.4	36 x 6.4	36 x 12.0									

## Metric Bores and Keyways

Bore Dia. (mm)	Keyway		Shallow Keyway Depth	Bore Sizes Available							
	Width (mm)	Depth (mm)		3525	3535	4030	4040	4535	4545	5040	5050
35	10	3.3	-	•	•						
38	10	3.3	-	•	•						
40	12	3.3	-	•	•	•	•				
42	12	3.3	-	•	•	•	•				
45	14	3.8	-	•	•	•	•				
48	14	3.8	-	•	•	•	•				
50	14	3.8	-	•	•	•	•				
55	16	4.3	-	•	•	•	•	•	•		
60	18	4.4	-	•	•	•	•	•	•		
65	18	4.4	-	•	•	•	•	•	•		
70	20	4.9	-	•	•	•	•	•	•	•	•
75	20	4.9	-	•	•	•	•	•	•	•	•
80	22	5.4	-	•	•	•	•	•	•	•	•
85	22	5.4	-	•	•	•	•	•	•	•	•
90	25	5.4	-	•	•	•	•	•	•	•	•
95	25	5.4	-	•		•	•	•	•	•	•
100	28	6.4	4.4	•*		•	•	•	•	•	•
105	28	6.4	-			•	•	•	•	•	•
110	28	6.4	-			•	•	•	•	•	•
115	32	7.4	5.4			•*		•		•	•
120	32	7.4	-					•		•	•
125	32	7.4	-					•		•	•
130	32	7.4	-							•	•
140	32	8.4	6.4							•*	•

## Inch Bores and Keyways

Bore Dia. (in.)	Keyway		Shallow Keyway Depth	Bore Sizes Available							
	Width (in.)	Depth (in.)		3525	3535	4030	4040	4535	4545	5040	5050
1.500	0.375	0.11	–	•	•						
1.625	0.437	0.13	–	•	•						
1.750	0.437	0.13	–	•	•	•	•				
1.875	0.500	0.13	–	•	•	•	•				
2.000	0.500	0.13	–	•	•	•	•				
2.125	0.625	0.18	–	•	•	•	•	•	•		
2.250	0.625	0.18	–	•	•	•	•	•	•		
2.375	0.625	0.18	–	•	•	•	•	•	•		
2.500	0.625	0.18	–	•	•	•	•	•	•		
2.625	0.750	0.21	–	•	•	•	•	•	•	•	•
2.750	0.750	0.21	–	•	•	•	•	•	•	•	•
2.875	0.750	0.21	–	•	•	•	•	•	•	•	•
3.000	0.750	0.21	–	•	•	•	•	•	•	•	•
3.125	0.875	0.26	–	•	•	•	•	•	•	•	•
3.250	0.875	0.26	–	•	•	•	•	•	•	•	•
3.375	0.875	0.26	–	•	•	•	•	•	•	•	•
3.500	0.875	0.26	–	•	•	•	•	•	•	•	•
3.750	1.000	0.32	0.245	•*		•	•	•	•	•	•
4.000	1.000	0.32	0.155	•*		•	•	•	•	•	•
4.250	1.250	0.37	–			•		•	•	•	•
4.500	1.250	0.37	0.255			•*		•	•	•	•
4.750	1.250	0.37	–					•	•	•	•
5.000	1.250	0.37	0.258					•*	•	•	•

Items marked with "\*" have a shallow keyway.



The detailed listings and information within this catalogue have been researched and compiled from reliable sources, and are knowingly correct to the best of our knowledge.

**NIS™** does not accept any liability or responsibility for errors or omissions or damage resulting from use of any information contained in this catalogues.

Contact your nearest **NIS™** Distributor for assistance.



**NIS**<sup>TM</sup>

